

Local Flood Risk Management Strategy

Patrick Goodey & John Stevens

Flood & Water Management Act (2010)

- BCC is the Lead Local Flood Authority
- Produce and maintain a Local Flood Risk Management Strategy
- Original Bristol LFRMS adopted in 2014
- Work in partnership

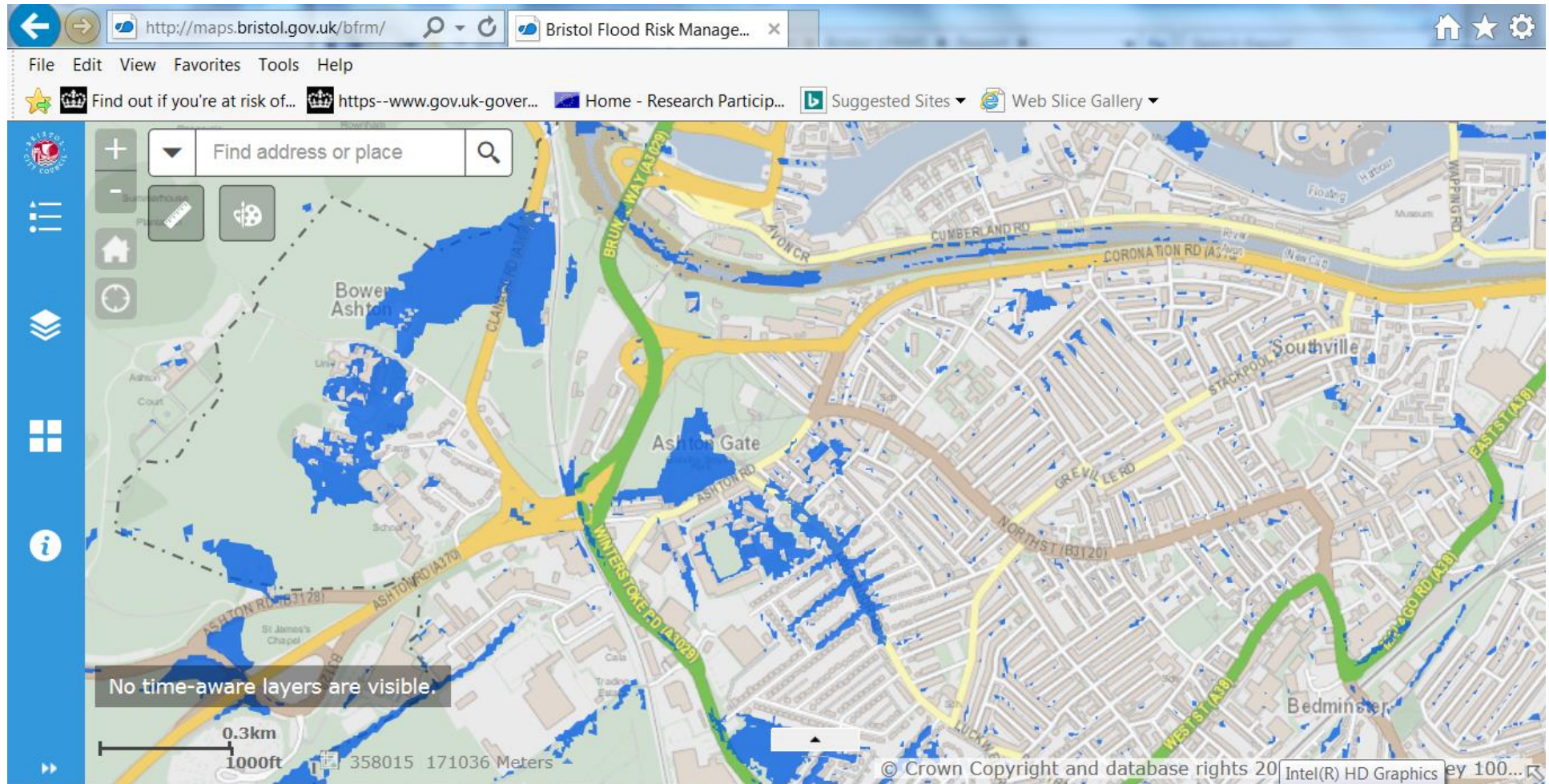


Strategic City Transport

Flood Risk Management Team



Surface water flood risk



Strategy Format

Objective 1

National objective:

- Understand the Risk

Local objective:

- Gain a greater understanding of the flood risks posed to Bristol and its people and places

Action No.	Action Name	Short term 2016 - 2018	Medium term 2018 - 2022	Long term 2022 onward
1.1	Complete SWMP update including Ashton surface water flood risk study			
1.2	Complete River Avon Tidal Flood Risk Management Strategy			

Progress



Tidal flood risk
at Avon
Crescent
reduced by
Cumberland
Road flood
defence wall



Surface water
flooding held in
Fonthill Park
attenuation
basin



Flood Risk Management in Bristol

Avonmouth Sevenside Enterprise Area (ASEA) Ecology Mitigation and Flood Defence Project

Flood storage basin in Southmead



Embleton Road SuDS Southmead

Dorian Road drainage improvements

Station Lane drainage improvements

Easton Cycle Way infiltration basin

Easton show home rain garden

Brislington Brook retaining wall repair



River Avon Tidal Flood Risk Management Strategy

New flood defence wall at Cumberland Road



Flood proof fencing in south Bristol



Reducing Flood Risk

Since the inception of the Local Flood Risk Management Strategy in November 2014 we have reduced the risk of flooding to an estimated 220 homes.

Recent works undertaken are demonstrated in the map adjacent.

This has included making a number of improvements to river control structures to reduce the risk of flooding, for example in Victory Park, Brislington and Trevisa Grove, Brentry.

We have also worked in conjunction with partners and the community to proactively manage and respond to a number of weather warnings and flood events.

Contributing towards achieving sustainable development

The BCC FRM team review planning applications in respect of surface water management and drainage. This helps influence development in the city and reduces its impacts on increasing flood risk. Benefits from this are gained in the following aspects:

- Approximately 250 development proposals have incorporated Sustainable Drainage Systems (SuDS) in their designs
- Nearly 200 have made a reduction in existing surface water run off rates
- Over 150 have made water quality improvements

Stay in touch with your council
www.bristol.gov.uk/signup



Illustration Designed and printed on Sustainability Sourced Material by Bristol Design Bristol City Council March 2017

Progress

Action status	Number of actions	Summary of Actions
Complete	17	Flood schemes and projects, installation of monitors and asset register
Outstanding	3	Update existing computer simulation modelling
Removed	3	National policy and legislation change
Actions amended	2	In line with policy change and better practice
New actions added	6	To increase understanding and improve processes

LFRMS Finance

Funding Type	Funding source	Approx. Budget (£, k)	Activities funded
Revenue	DCLG (Revenue Support Grant)	217/yr	Maintenance, analysis, feasibility studies
Capital	Transport Capital programme	65/yr	Small mitigation schemes, environmental enhancements
	Project specific – EA, Wessex Water, others	Varies, project specific	Flood mitigation schemes (subject to business cases)

Next Steps

We request guidance to obtain the following;

- Support of the LFRMS update.
- Steer on the engagement strategy. How can we engage with communities about flood risk?
1968 flood 50th anniversary next year.

LFRMS Changes

Actions completed

Undertake Avonmouth/Sevenside flood defence study

Update and procure Flood Risk and Drainage Advice and Design consultancy Framework

Formulate methodology to identify significant flood risk assets for the Flood Risk Asset Register

Install trash screen monitors and rain gauges

Develop the flood events records database

Publish appropriate datasets such as the Flood Risk Asset Register on the Council's web site

Update and procure watercourse maintenance contract

Identify and prioritise watercourse structural improvement requirements

Attend Environment Agency community flood plan meeting(s) to improve knowledge and help improve community flood resilience

Actions completed

Deliver Dundry flood alleviation scheme

Progress Sustainable Southmead water sensitive design feasibility work including Stanton Road and Trowbridge Road high risk areas

Develop process for risk based approach to highway gully maintenance and leaf clearance

Produce and publish improved LLFA section on BCC website

Produce and develop a community engagement activity to manage highway gullies and debris clearance

Formalise process for reviewing planning applications following Development Management standards

Formalise process for consultation with RMAs, City Docks and other relevant teams and authorities to seek consistency of approach and advice provided

Setup procedures with the BCC working group to use existing studies to help improve knowledge and flood prediction

Actions outstanding

Complete integrated Ashton flood risk study in partnership with EA and WW

Formalise process for consulting on RMA led schemes to maximise inclusion of SuDS and green space

Update the SFRA (see Appendix D) with results from recent studies

Actions removed

Establish the SAB (SuDS Approval Body) subject to enabling Government Legislation

Implement an interim SAB approach including production of Local SuDS guidance, requirements and associated Planning Guidance Note. Implement drainage adoption on an optional basis with additional requirements, exclusions and charges to be determined

When established, SAB to evaluate drainage applications. Adopt, charge for and maintain those SUDs which SAB has duty to adopt.

Actions amended

Implement drainage adoption on an optional basis with additional requirements, exclusions and charges to be determined.

Liaise and work in conjunction with colleagues in BCC who have a role to fulfil as the LLFA. To promote and co-ordinate flood response and preparedness across key teams within the authority

New actions added

Begin use of Confirm asset management software and transference of applicable information. Including asset inspections, issuing of maintenance work, records of visits from contractors and developing forecast spend profiles.

Improve the recording system of flood risk management activities undertaken. To demonstrate clearly to other RMA's and the public the progress made in completion of Strategy actions and the status work carried out.

Continue to provide flood risk data to BCC Civil Protection Unit to inform emergency management procedures.

Rerun the Surface Water Management Plan model to reflect recent advances in computer simulation software

Contribute towards the completion of the Horizon 2020 RESilience to cope with Climate Change in Urban arEas (RESCCUE) project with European partners

Submit comments in line with the agreed procedures and risk based approach on all Major planning applications with regards to surface water management and drainage. To fulfil the role of the LLFA as a statutory consultee.