

Presentation to Place Scrutiny

Economic Development

Howard Swift
Service Manager Economic Development

17 March 2016

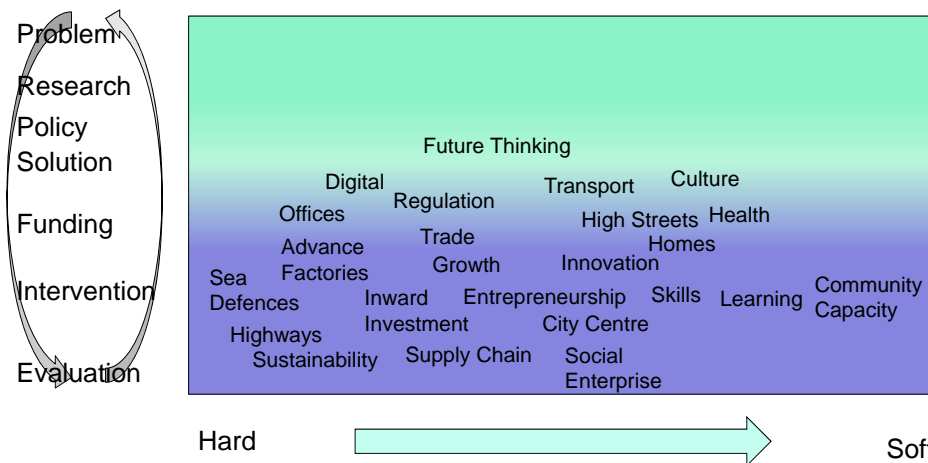
Place

Economy

Slide 1



The Economic Development Landscape



Place

Economy

Slide 2



Resources

- Establishment – 10.5 FTE
- Net Revenue Budget (exc staff) £186k
- T/O £1.75m
 - Core Projects
 - Filwood Green Business Park
 - BottleYard Studios
 - IBB/4

Place

Economy

Slide 3



In The Round

WHAT WE DO....

- Three Teams + Shared Service
 - Economic Development Projects
 - South Bristol SUD and ESIF
 - ASEA
 - Severn Energy
 - Business Support and Entrepreneurship
 - High Streets and Local Centres
 - Investment Promotion Support
 - Core Cities and Devolution support
 - The BottleYard Studios
 - Filwood Green Business Park
 - Shared Service - Invest in Bristol and Bath

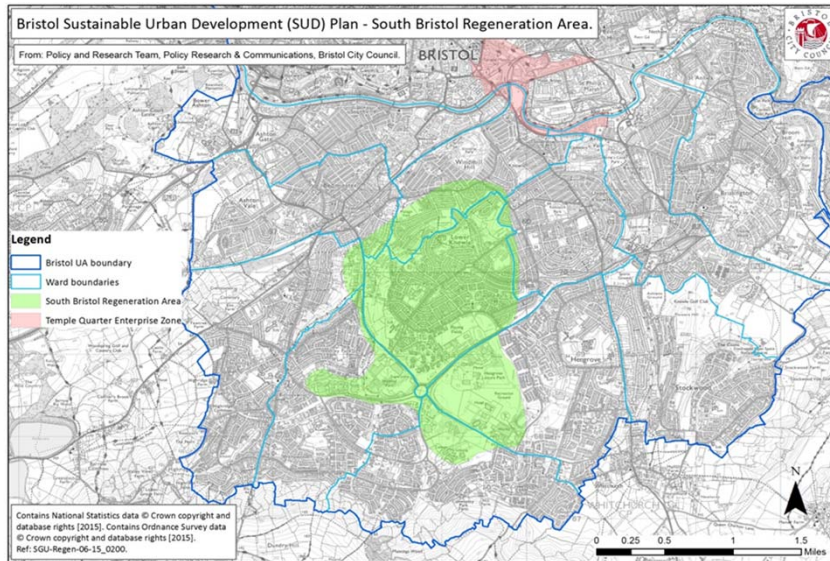
Place

Economy

Slide 4



South Bristol SUD 2016-2020



Place

Economy

Slide 5



South Bristol SUD 2016-2020

ISSUES

- Focus on the South Bristol Regeneration Area
- Wards - Filwood, Hengrove, Windmill Hill, Knowle, Hartcliffe, Bishopsworth, Whitchurch Park and Bedminster
- Economic activity rate is 4% lower than the City as a whole
- Population of 19,460 across 12 neighbourhoods within the most disadvantaged 5% nationally (2015)
- Income, employment, education, skills, training, health and disability are particular issues
- Strong links to persistent worklessness

Place

Economy

Slide 6



South Bristol SUD 2016-2020

ACTIVITIES & RESOURCES

- ERDF £2.575 million
- £5.15m if fully matched @ 50%
- Focus:
 - SME Competitiveness – entrepreneurship, start ups & business growth
 - Low Carbon Economy - energy installations public buildings & housing, and low carbon innovation
 - Smart Specialisation: Green Economy in SB – energy, construction, digital manufacturing - FGBP & other 'Labs'
- BCC role as Intermediary Body to DCLG – requires programme team before launch in Autumn 2016

Place

Economy

Slide 7



South Bristol SUD 2016-2020

OUTCOMES

- Community-based economic development and sustainable infrastructure (public buildings and housing) investment
- Improved enterprise culture, emerging higher-value sectors and greater diversity and quality of jobs in South Bristol
- Stronger functional linkages between areas & sectors within SB

OUTPUTS

- 250+ businesses supported
- 110+ start ups & 110+ new jobs
- 6.5 Mwh p.a. decrease in energy use in public buildings

Place

Economy

Slide 8



Avonmouth Severnside Enterprise Area

ACTIVITIES & RESOURCES

- ASEA Infrastructure Phase 1 - Design & Development
 - Flood defence and eco-mitigation schemes from Avonmouth to the Severn Bridges
- SevernNet Working Project
 - Better access for Communities to jobs in ASEA
 - Enterprise support
 - New cycle paths and Shuttle Bus pilot
 - SGC / BCC & Community Partners (ALW, ACC & SevernNet).
- Avonmouth Community Resilience Fund
 - ED leads set up of £1 m – jobs, enterprise, high streets, social impact (4 villages)

Place

Economy

Slide 9



High Streets and Local Centres

- Diverse and responsive high streets/local centres
- Support for traders' associations, town teams, business groups, Business Improvement Districts
- Support the delivery of Neighbourhood Partnership Action Plans
- Business support and training opportunities
- Outcomes – retail vacancy rates, BID income, funding attracted, Bristol Pound membership
- Key stakeholders – traders' associations, business groups, Business Improvement Districts, Neighbourhood Partnerships, businesses, business support organisations e.g. Federation of Small Businesses, Business West

Place

Economy

Slide 10



City Centre

- Develop the City Centre as an excellent quality place, priorities:
 - Old City & Bristol Shopping Quarter Framework
 - Empty Property Plan
 - Influence strategies/policies and developments which impact on the city centre
 - Support Destination Bristol's proposal for a Business Improvement District
- Key stakeholders – land owners, investors, developers, Neighbourhood Partnerships (including Councillors), Bristol Civic Society, Bristol Parks Forum, Destination Bristol, Old Market Community Association, Castle Park Users Group, Historic England, funders.
- Investment confirmed of £155,000 for framework (including transport studies for Callowhill Court) and Empty Property Plan

Place

Economy

Slide 11



Invest in Bristol and Bath

- Shared Service
- Funded from City Deal growth in EZ/EAs
- 2015-2020
- Three Teams
 - Marketing
 - Product Development – Sector Support
 - Enquiry Handling
- West of England view
- True joint working

Place

Economy

Slide 12



The BottleYard Studios

KEY OBJECTIVES

- Employment
- City Economy
- Vibrant Bristol
- Re-purpose site
- Education



Place

Economy

Slide 13



The BottleYard Studios

KEY OUTPUTS

- Over 350 jobs on site – more than with Matthew Clark
- Retains 400+ jobs at Matthew Clark
- Circa £13.8M to the local economy
- TV & Film productions including:
 - Poldark (2 series), Wolf Hall,
 - Lost Honour of Christopher Jefferies
 - Deal or No Deal

Place

Economy

Slide 14



The Bottle Yard Studios

KEY STAKEHOLDERS

- BCC
- 18 Permanent Tenants (Inc Matthew Clark)
- TV and Film Productions
- City of Bristol
- Managing Agents, The Purcell Partnership

FINANCE

- Fiscally neutral

Place

Economy

Slide 15



The Bottle Yard Studios

- The Lost Honour of Christopher Jefferies



Place

Economy

Slide 16



The Bottle Yard Studios

- Liz Murphy,
E Murphy Designs



- Amalgam
- Precision Cargo
- Location Assist

Place

Economy

Slide 17



Filwood Green Business Park



FILWOOD
GREEN BUSINESS
PARK



A new home for
**small environmental
business**
in South Bristol

Place

Economy

Slide 18





Place

Economy

Slide 19



Enterprise Focus

- Work Hub for start-ups
- Small offices and workshops / studios
- Affordable, flexible terms
- High speed broadband included
- Designed for interaction
- Future - on site enterprise support

Place

Economy

Slide 20



Key Objectives

- Regeneration - KWRF
- Attract start-ups and SMEs
- Provide new jobs and opportunities
- Enterprise hub for South Bristol
- Environmental exemplar
- Pay for itself

Place

Economy

Slide 21



Key Outputs

- ERDF Output Targets
- RIF targets - 350 jobs
- Occupancy targets (Y1 50% / 30%)
- Operating Surplus Y3
- Repay loan 2020-2024

Place

Economy

Slide 22



Key Stakeholders

- Business – 21 tenants
- Local community
- Advisory Group
- DCLG
- HCA
- LEP
- Elected members

Place

Economy

Slide 23



FGBP Tenant Businesses

Knowle West Media Centre

The Factory – Rising High

Community Baking



MTS Environmental – Waste
Management Software

Place

Economy

Slide 24



The Economic Development Landscape

Problem
Research
Policy
Solution
Funding
Intervention
Evaluation

Place

Slide 25

Systems Leadership

- Bristol Futures
- Employment and Skills
- Procurement and Social Value – Supply Chain
- Business Rates
- Licensing and Regulation
- Sustainability

- Transport
- Planning
- Policy and Research
- Local Enterprise Partnership
- Development
- Property

Place

Slide 26

Arena Preferred Building Contractor



An international contractor with local Bristol office

Bouygues Group have delivered flagship venues around the world:



Singapore Sports Hub
Singapore



Maracanã Stadium
Rio de Janeiro



Stade Vélodrome
Marseille

Place

Economy

Slide 27



Building Contract ITT

BCC asked tenderers to demonstrate:

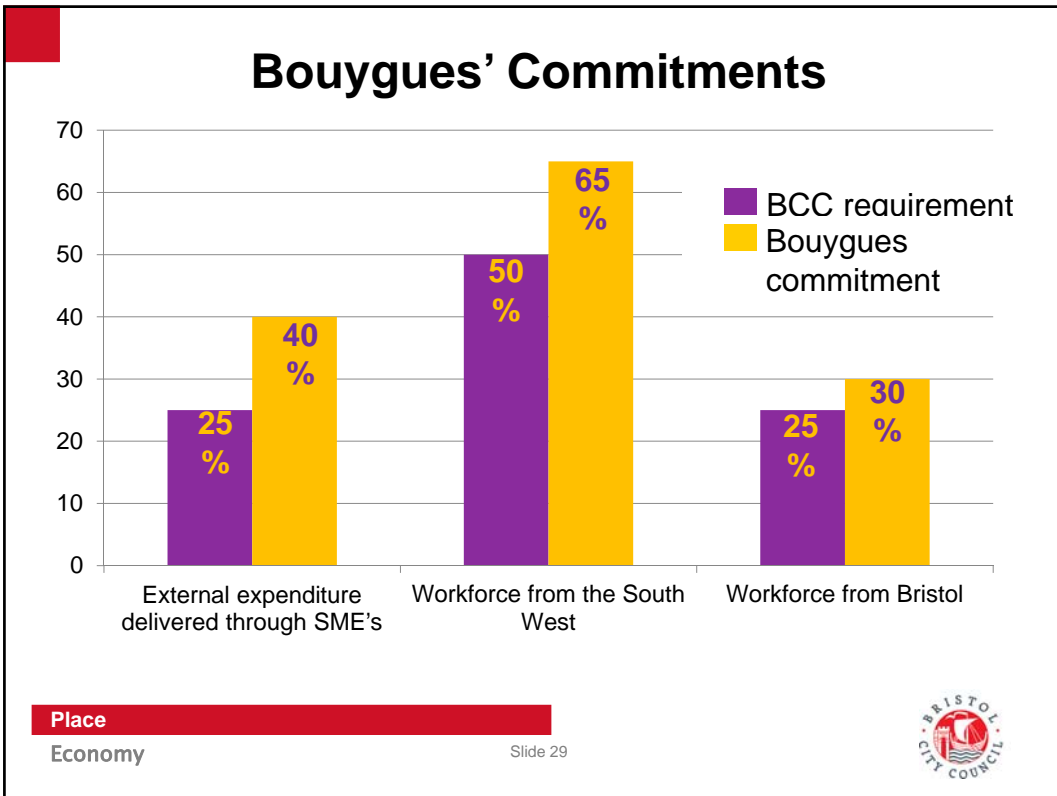
- Opportunities for long term unemployed, care leavers and under represented groups;
- 25% of external expenditure delivered through SMEs;
- 50% of workforce from the South West, including 25% from Bristol;
- 1 apprentice per £2m construction cost and a minimum of 10 work placements;
- Monitoring.

Place

Economy

Slide 28






Bouygues' Commitments

Bouygues proposes
48 apprenticeships (BCC asked for 1 apprentice per £2m construction cost (which equates to 34 apprentices))
40 work placements (BCC asked for a minimum of 10 work placements / work experience opportunities)
4,180 person weeks of training throughout the project
1,825 pupil interactions across all ages of education organisations in Bristol
A range of educational commitments for primary school students through to postgraduates e.g. workshops, careers advice, site visits and enterprise events

Place
Economy

Slide 30



Community Engagement



Place

Economy

Slide 31



Funding

- Core funding
- Sustainable Urban Development
- ESIF – Business Support
- ESIF – Social Enterprise
- ESIF – Technical Assistance
- Urban Innovative Actions
- Innovation Audit
- INTERREG

Place

Economy

Slide 32



On the horizon

- Local Government Funding
- DevoWest, Combined Authority, Great Western Powerhouse
- Pipeline Projects
 - Housing
 - Highways
 - Flood Defence
 - Business Support – Growth Hub
 - Workspace
- Referendum result
- Business Funding
- Sustainability Bonds

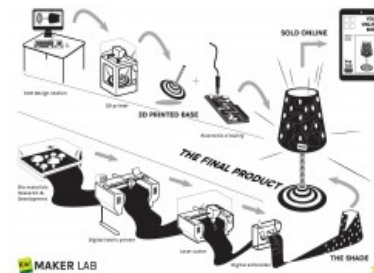
Place

Economy

Slide 33



Questions ?



Place

Economy

Slide 34

