

Overview and Scrutiny Management Board Supplementary Information



Date: Monday, 30 November 2020

Time: 2.30 pm

Venue: Virtual Meeting - Zoom Committee Meeting
with Public Access via YouTube

10. COVID-19 Update (for information)

(Pages 2 - 4)

Issued by: Dan Berlin, Scrutiny Advisor

City Hall, Bristol, BS1 5TR

Tel: 0117 92 222000

E-mail: democratic.services@bristol.gov.uk

Date: Monday, 30 November 2020



Overview & Scrutiny Management Board



30th November 2020

Title: COVID 19 bi-weekly Bristol statistics update

Ward: ALL

Recommendation:

For the Overview & Scrutiny Management Board to note the City Council's COVID-19 bi-weekly Bristol statistics update of 27th November 2020.



COVID-19 bi-weekly Bristol statistics update



Friday 27 November 2020

We aim to publish a COVID-19 bi-weekly Bristol statistics update twice a week, on Tuesday and Friday afternoons. This may be delayed until the following day, depending on when data is made available. These numbers and rates do change daily but were accurate when published on the date stated on the report.

Summary

This week we heard that Bristol, along with North Somerset and South Gloucestershire will be in Tier 3 of the new restrictions from 2nd Dec. This status will be reviewed on 16th Dec.

There is evidence that the current lockdown measures have been effective, as Bristol rates have slowed for the first time in many weeks. Thank you to all who have supported our local efforts. We must not stop now; every action makes a difference, protecting our families, loved ones and our NHS.

Bristol's rate of 300.2 new cases per 100,000 population in the last 7 days (based on provisional data to 22 Nov) is lower than reported on Tuesday earlier this week (390.2 per 100,000). The reported rate represents 1,391 positive cases reported for Bristol over the past 7 days within a population of over 463,000 people.

The number of new infections in Bristol declined compared to late last week, but the Bristol rate remains well above the England rate of 200.4 per 100,000 and is currently ranked 30th highest among 149 English local authorities. As of this morning, there were 247 people in our local hospitals (not just Bristol residents) that have tested positive for COVID-19 and our health system is under considerable pressure. We can expect to see this trend in hospitalisations continue for some time after cases decrease as any intervention will take some weeks to take effect. Our local hospitals are seeing an increase in people requiring treatment for COVID-19 symptoms.

We continue to take additional measures focussing on back to basics communication, engaging with communities and the public, enforcement, and taking on local contact tracing. We monitor the situation closely working with Public Health England, the NHS, Department of Health and Social Care and our neighbouring local authorities. A network of community hubs provides action and support across the city and neighbourhood task groups are coordinating focused action in high incidence areas.

The regional R number is estimated to lie within a range of 0.9 – 1.1. Although it is lower than last week, it is still reflecting the rise in cases locally and nationally. The range of R is above 1 indicating the epidemic is increasing.

41% of cases are in the under 30 age group, reflecting schools returning and universities opening, and younger adult social behaviours.

45% of cases are in adults aged 30-59. Of particular concern is the rise of cases among adults 60+.

Bristol City Council continues to work closely with schools and Public Health England to ensure that school clusters are investigated and managed appropriately. We are grateful to our schools, teachers, pupils and parents for taking appropriate action, even though it is very disruptive.

We are working closely with our universities and Public Health England on arrangements for the end of term and students going home. We thank our students for continuing to be extremely responsible in coming forward for testing and in managing the challenges of isolating away from home. The daily Bristol University update can be found here: <http://www.bristol.ac.uk/coronavirus/statistics/> . The daily UWE update can be found here: <https://www.uwe.ac.uk/news/coronavirus/covid-19-cases> .

Government guidance permits all care home residents in England to receive visits from their family and friends in a COVID-secure way while national restrictions are in place. Visits, with PPE and social distancing, should be tailored to each resident and facility. Care home providers and families will need to find the balance between acknowledging the benefits of visiting on wellbeing and quality of life, and the risk of transmission of coronavirus (COVID-19) to staff and vulnerable residents. Measures to allow these visits to happen could include visiting pods, floor to ceiling screens, window visits and outdoor visits.

You can read the full guidance here: <https://www.gov.uk/government/news/new-guidance-to-support-safe-care-home-visits-during-lockdown> .

If you are in an at risk category, please take additional care in your interactions, while continuing to get exercise and maintaining social connections for your wellbeing. It is important to avoid exposure to the virus by keeping your distance from people who are not in your household. Meet outside, cover your face when in public places and frequently wash your hands.

There is local testing capacity available. If you have symptoms, or if you have been in contact with someone who is positive, it is vital that you isolate for the required period. This protects others and stops the virus spreading. Financial help is available for those on low incomes. We are developing local plans for the utilisation of Rapid Testing to support purposeful case finding to break chains of transmission.

Bristol remains at a very critical point in reducing rates of infection and protecting our NHS. We need everyone to continue to be extra careful – the virus spreads when people are in close proximity to one another. We can all avoid becoming a contact. Please take all action you can.

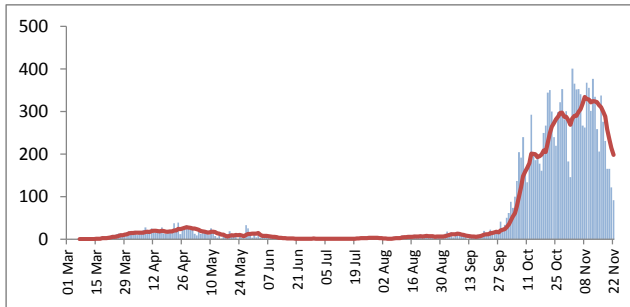
Help is available if you need it to isolate: <https://www.wearebristol.co.uk/> .

Thank you everyone for your sacrifices and support.

Act now. Hands, Face, Space, Isolate.

Cases of COVID-19

Up to 22 November there have been a total of 14581 confirmed cases of COVID-19 in Bristol. For the latest week there were 1391 new cases of COVID-19 in Bristol, a decrease from previous week (2203 cases in previous week)



compared to other local authorities

Rate of cases in last 7 days per 100,000

Bristol 300.2
England 200.4

Avon and Somerset Local Authorities

Bath and North East Somerset 141.2
North Somerset 203.7
South Gloucestershire 210.8
Somerset 104.8

Top 5 Local Authorities in England

Kingston upon Hull, City of 460.0
Medway 439.4
Stoke-on-Trent 419.3
Dudley 411.7
Sandwell 404.6

Test and Trace

13977 new cases were identified between 28th May to 27 November in Bristol. Of these 11473 were followed by the National Test and Trace system (82%). Those followed up provided details of 33287 contacts (average of 2.9 contacts per case). The National Test & Trace system has been in touch with 20045 of these identified contacts (60%).

Links / further info

[Bristol Local Outbreak Management Plan](#)
[Public Health England Covid-19 surveillance](#)
[UK Government Covid-19 in the UK](#)
[Office for National Statistics Covid-19](#)

COVID-19 Tests

In the last 7 days 11,262 community COVID-19 tests (not in hospital) have been undertaken, in the last 30 days it's 58,977 and 199,786 tests since March. In the last 7 days 8.6% of tests (1 in 12) were positive.

R number (South West region)

0.9 to 1.1

The reproduction number (R) is the average number of secondary infections produced by 1 infected person. If R is greater than 1 the epidemic is growing, if R is less than 1 the epidemic is shrinking.

The estimated range for the R number in the South West indicates that on average each positive case will result in between 0.9 and 1.1 new cases.

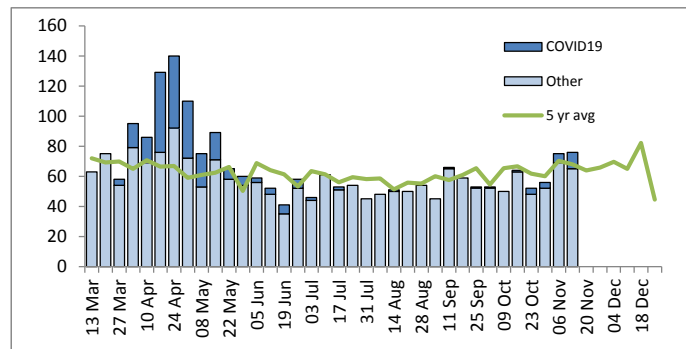
Growth rate

-2% to 2%

The growth rate reflects how quickly the number of infections are changing day by day. The latest estimated growth rate for the South West lies between 1% and 4%. The range of values indicates that the number of infections are growing but there is uncertainty about how fast they are growing.

Deaths from COVID-19

There have been a total of 282 COVID-19 deaths (12% of all deaths in that period) in Bristol since the beginning of March.



Data sources: GOV.UK, Public Health England, NHS Digital and the Office for National Statistics