

People Scrutiny Commission Supplementary Information



Date: Monday, 13 December 2021

Time: 5.00 pm

Venue: City Hall College Green Bristol BS1 5TR

6. Public Forum

Adult Social Care Flow Charts - Reference Public Forum Q3

(Pages 2 - 3)

Issued by: Dan Berlin, Scrutiny Advisor
City Hall, Bristol, BS1 9NE
Tel: 0117 3525232





Bristol City Council – Adult Social Care 'Generic' Pathway from Formal Assessment to Service and Review

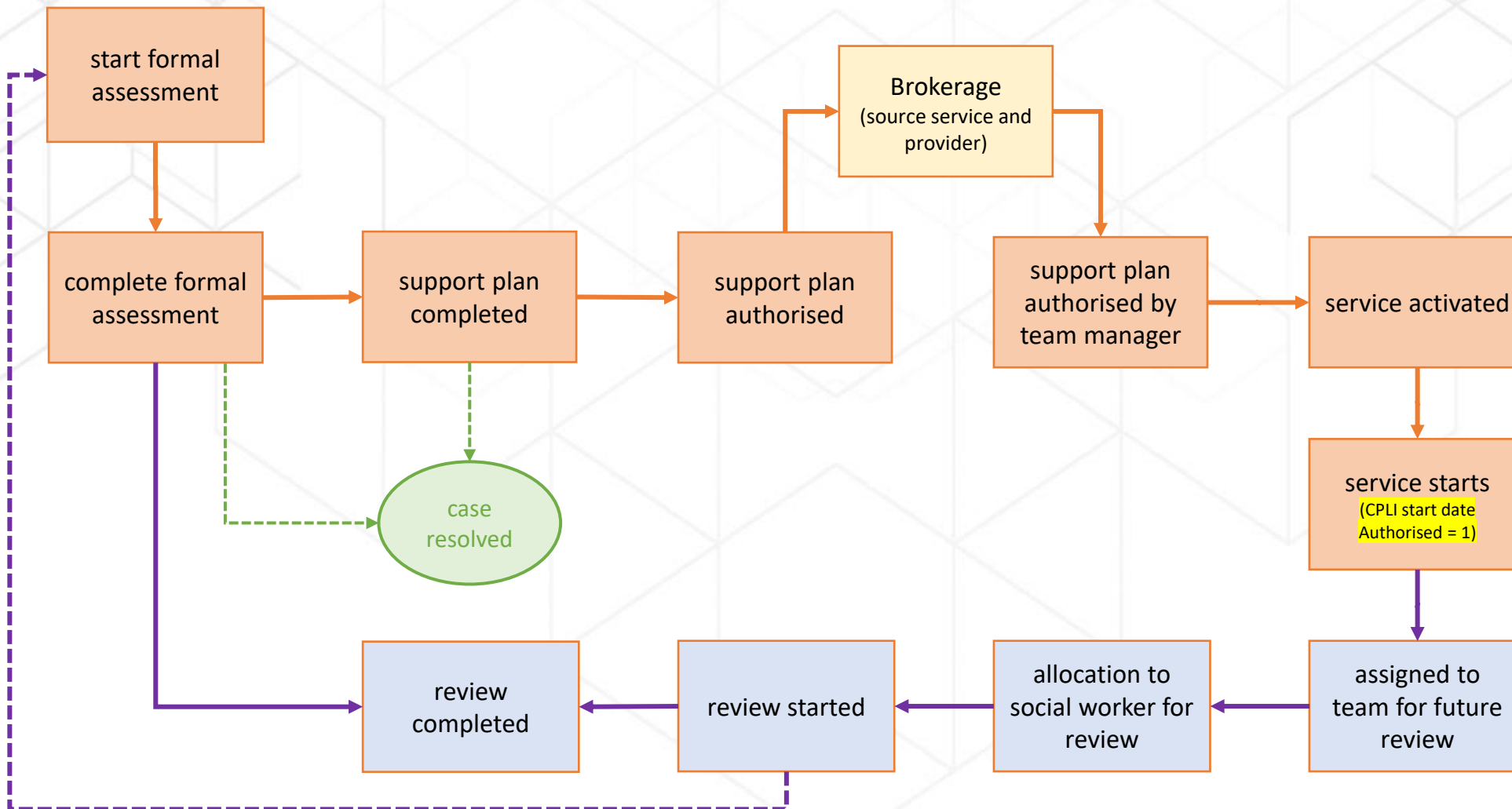
V1 17/02/2021



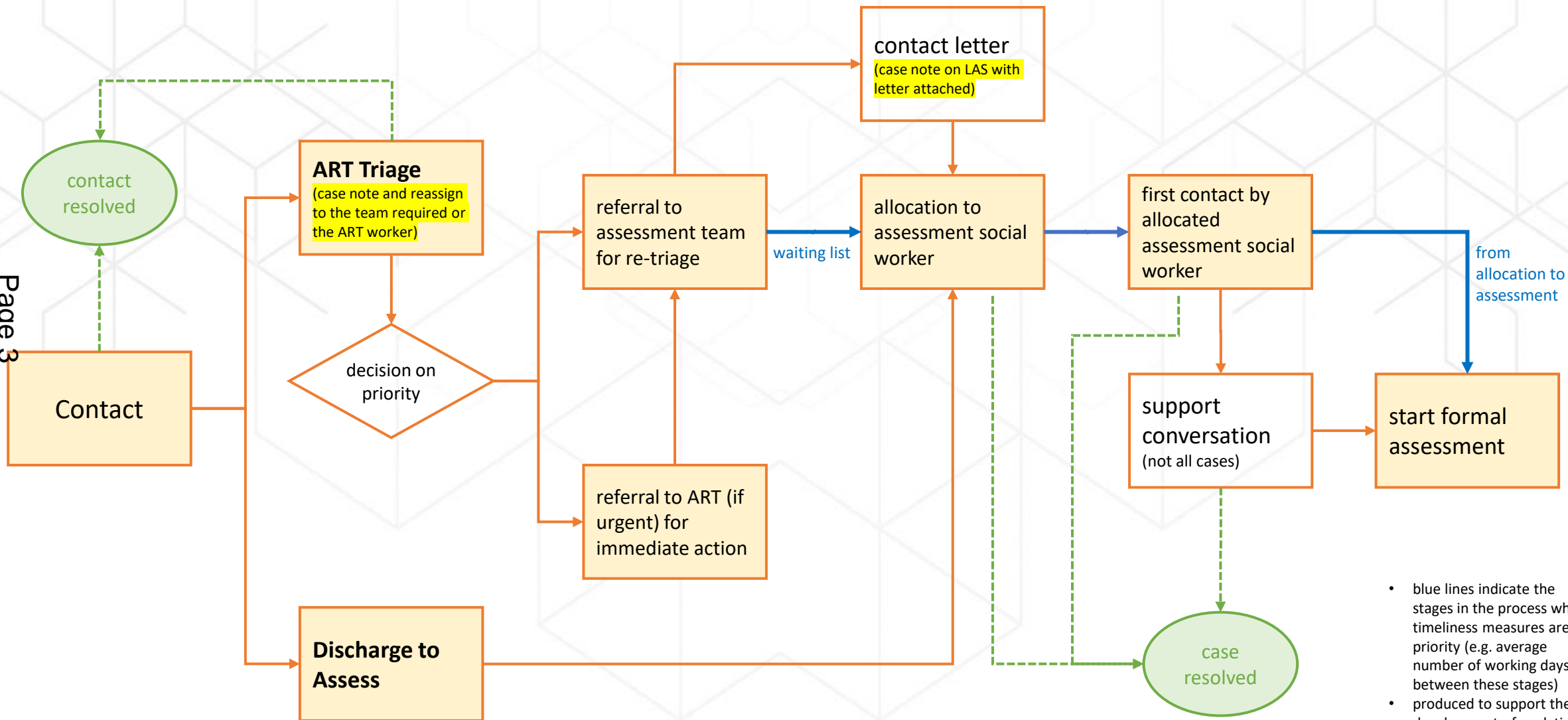
'Formal Assessments' in scope:

- Care Act Assessment
- Mental Health Assessment
- Best Interest Assessment
- Mental Capacity Assessment

Page 2



Agenda Item 6



- blue lines indicate the stages in the process where timeliness measures are a priority (e.g. average number of working days between these stages)
- produced to support the development of analytics in Power BI