

Bristol CAMHs HOSC

30th January, 2025



Michelle Cox, Clinical Director, CAMHS Secure and Specialised, AWP
Heather Kapeluch, Head of Operations, CAMHS, AWP
Faye Gladwin, Senior Performance Manager, Mental Health, ICB

AWP

BNSSG ICS Priorities

Draft Joint Forward Plan Refresh

- Improve access to and reduce waits for children's mental health services
- Coordinated action across system partners to improve outcomes for children and young people missing education
- Continue to develop a comprehensive Mental Health Support Teams in School service including roll out of new teams
- Build on existing transition improvement and scope opportunities to improve experience and outcomes for children moving on to adult services
- Clarify and promote BNSSG crisis support and guidance for professionals, including delivery of crisis support via NHS111 dial 2
- Address pathway issues and service gaps in eating disorders.
- Continue neurodiversity transformation programme including testing of neurodiversity support hubs
- New BNSSG-wide SEND plan



CAMHS – Bristol



Successes

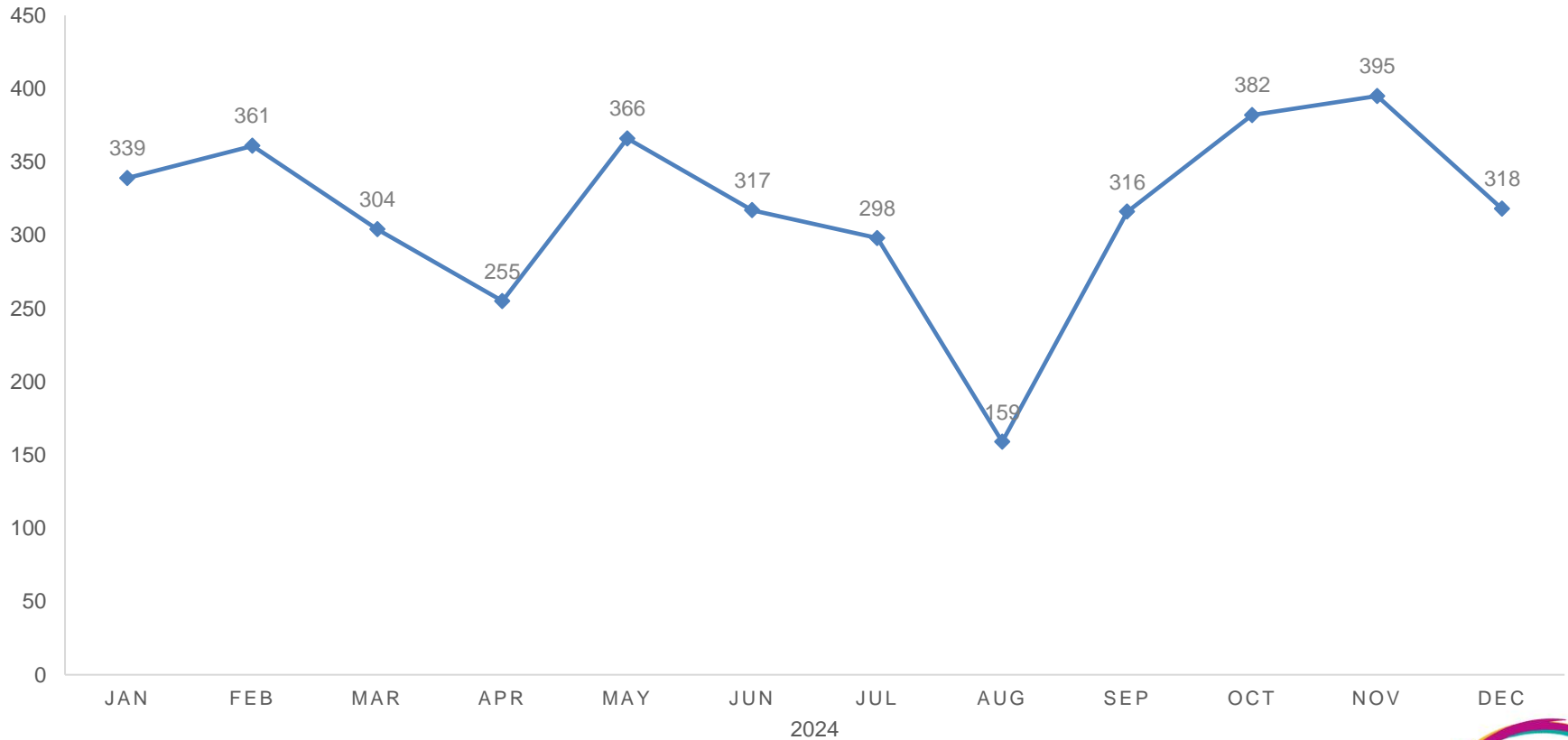
- Recruited the Getting Advice team
- Development of a telephone support line
- Development of the “Waiting Well” calls
- Meeting the urgent performance targets and maintaining treatment waits
- Successful recruitment across all teams
- Focus on wellbeing
- Development of the young person’s transition service
- Recurrent funding for the Eating Disorder naso-gastric service

Challenges

- Adequate bases to meet the needs of service users
- Accessibility of services to meet the needs of children and young people
- Vacancies within some teams has impacted wait times

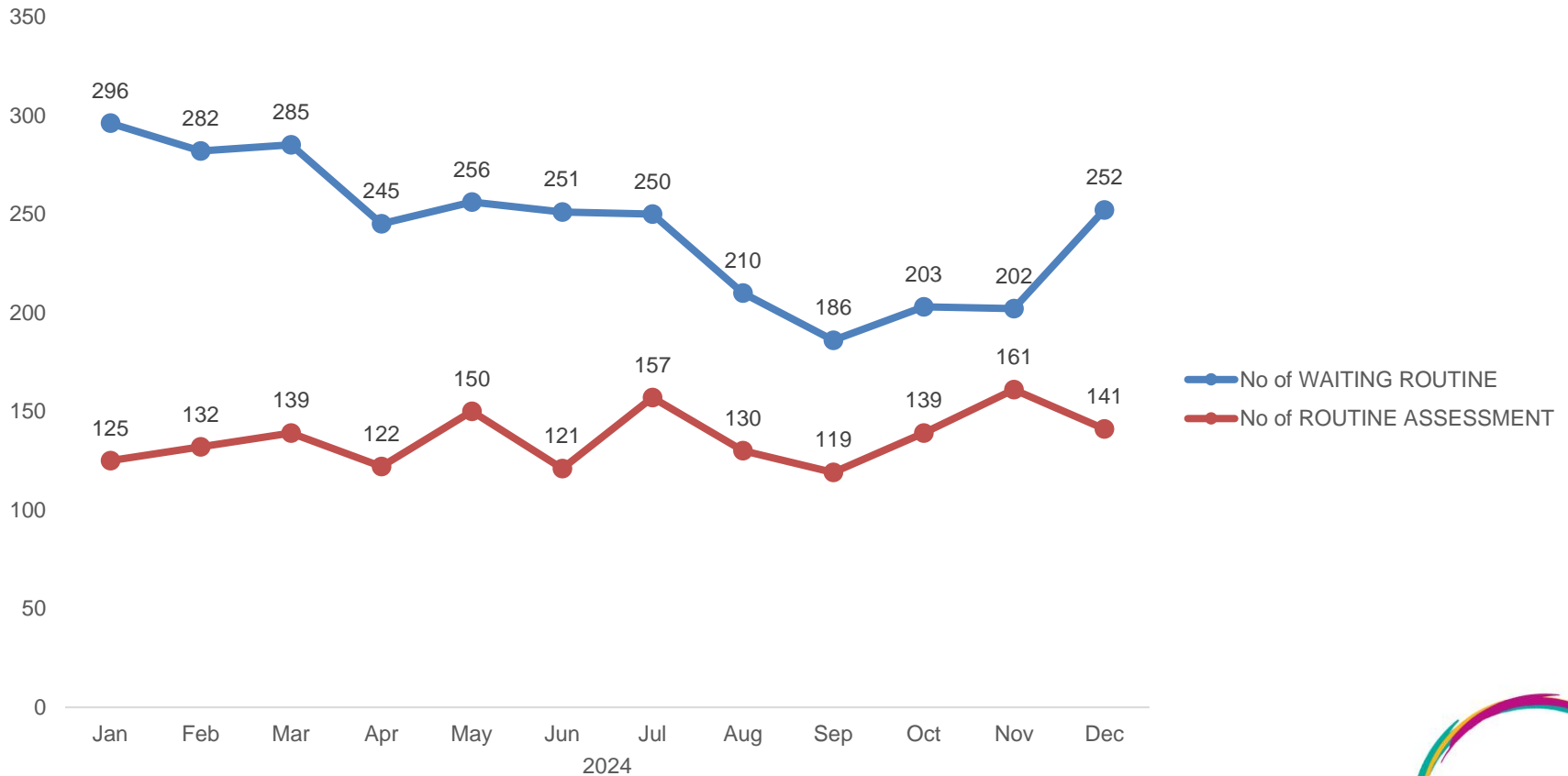


Bristol CAMHS Referrals

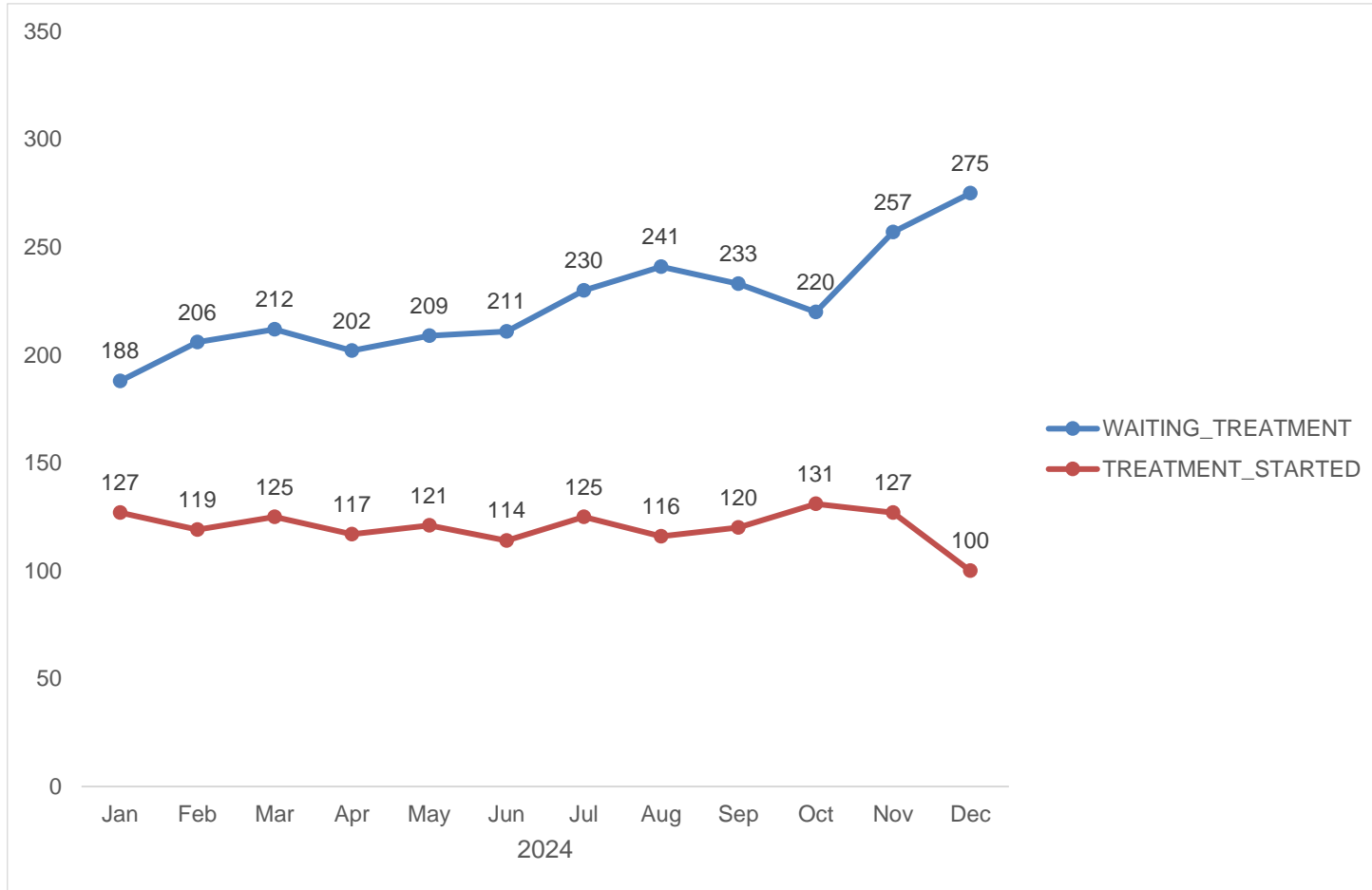


CYP Referral To Assessment

RTA WAITING TO RTA SEEN (28DAYS)

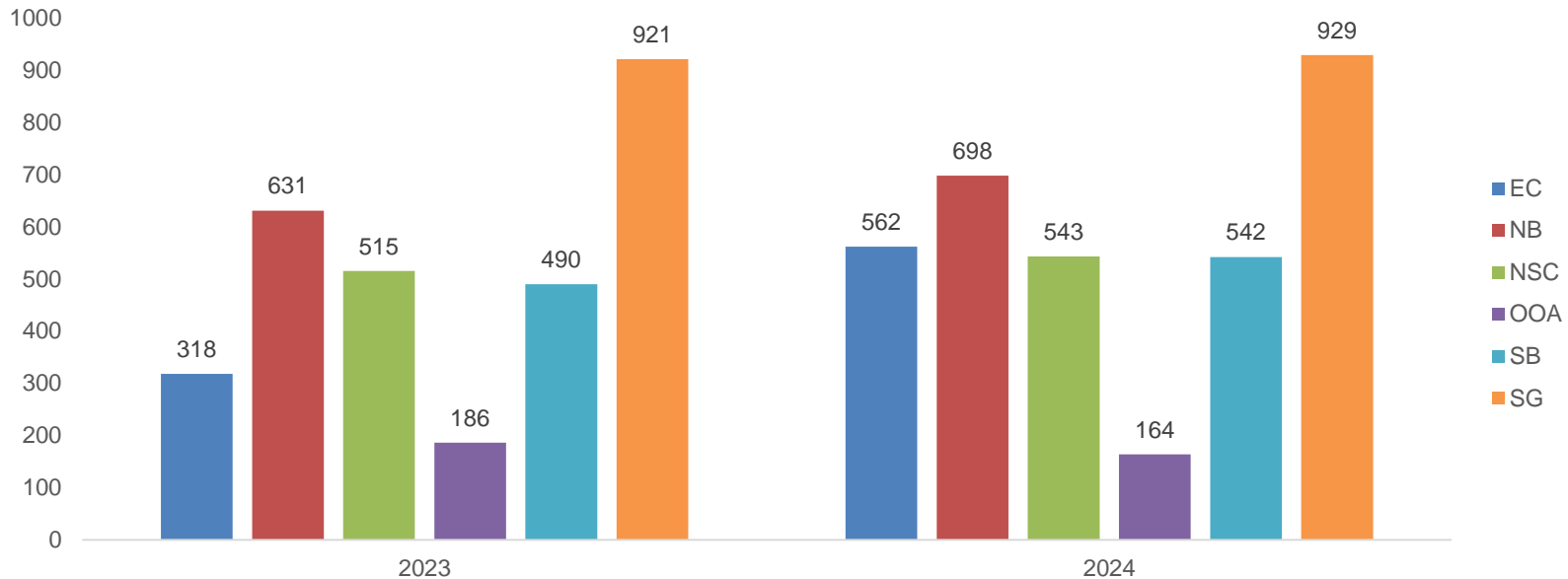


Referral To Treatment within 18 weeks



CAMHS Performance

CRISIS LINE



What's gone well

- The CAMHS Emergency Response line offers a 24/7 service, with consistently good feedback from acute hospitals, carers, young people and CAMHS colleagues.

What are the challenges

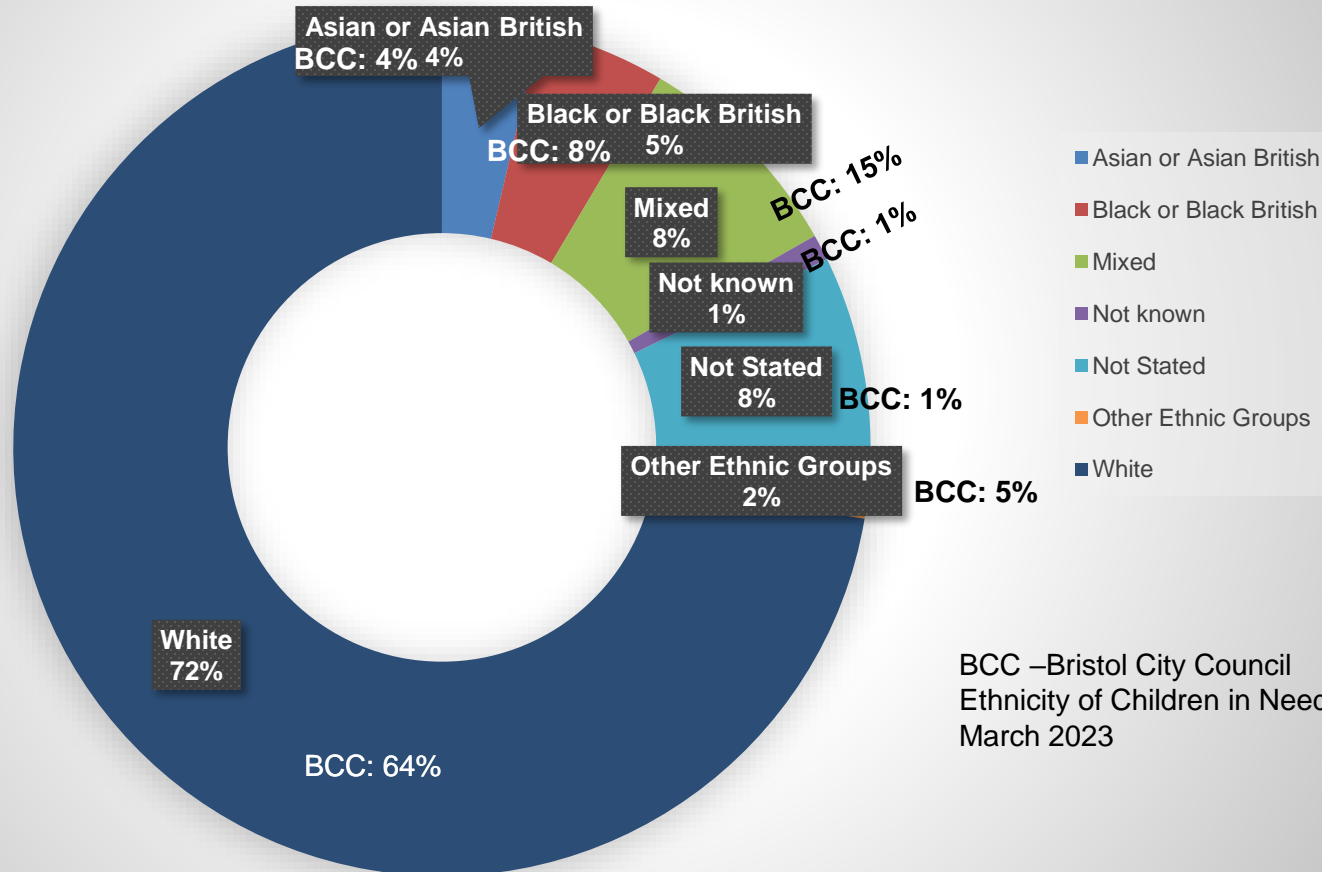
- Level of activity overnight declines steeply in terms of assessments and need for crisis support.
- Have needed an on-call function to make this possible, which has added an additional role for staff.
- The service will move to NHS 111 in 2025 to provide an all age provision with some reduction to current resources within CAMHS.



Referrals Demography

Bristol CAMHS

Ethnicity

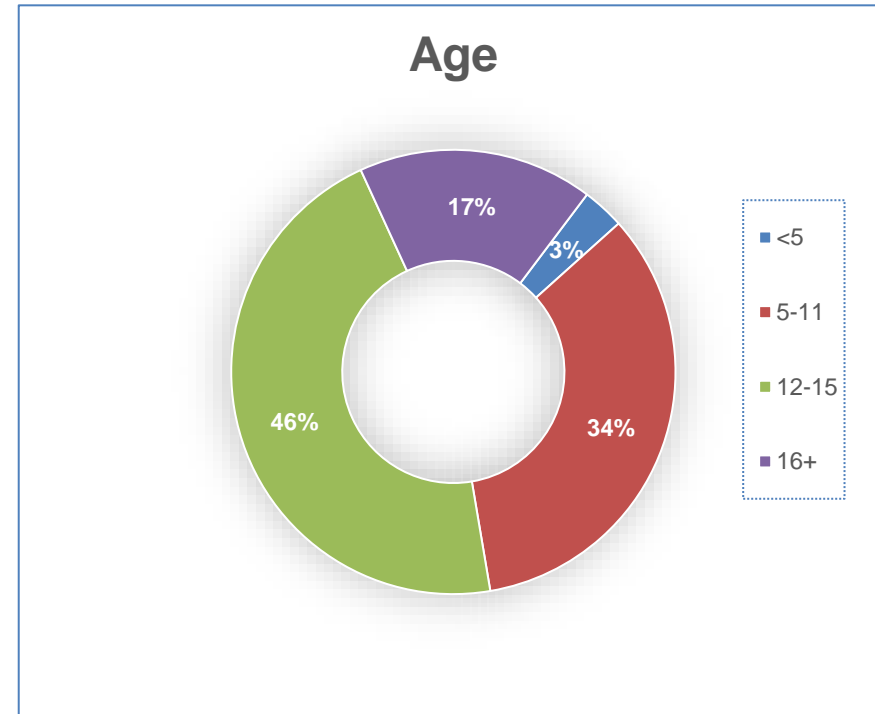
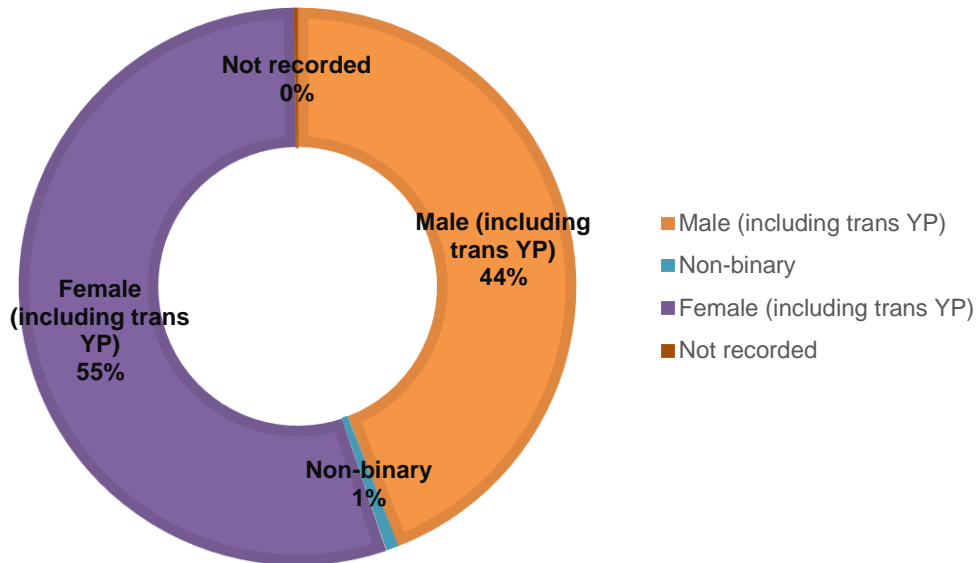


BCC – Bristol City Council
Ethnicity of Children in Need,
March 2023



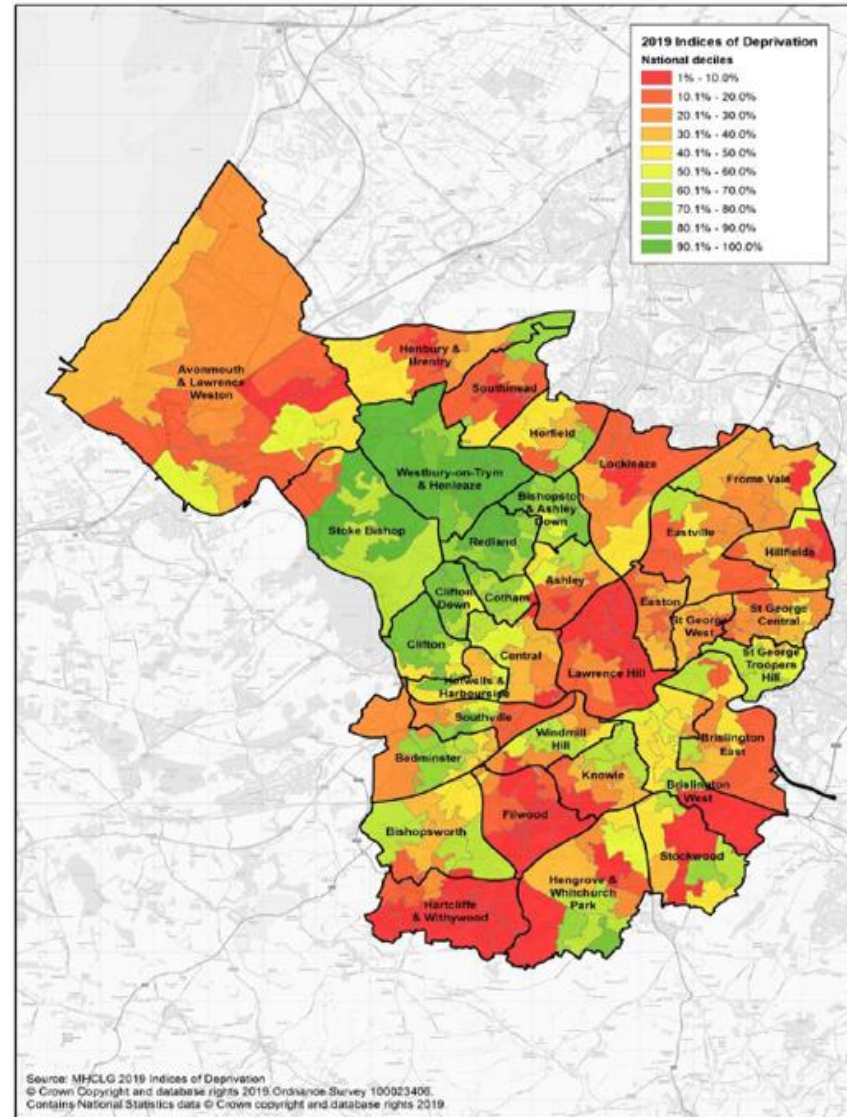
Referrals Demography

Bristol CAMHS



Deprivation Data

| Electoral Ward Name | % of referrals |
|-------------------------------|----------------|
| Hartcliffe and Withywood | 9.39% |
| Avonmouth and Lawrence Weston | 7.13% |
| Filwood | 6.14% |
| Hengrove and Whitchurch Park | 5.68% |
| Henbury and Brentry | 4.94% |
| Southmead | 4.33% |
| Lawrence Hill | 4.20% |
| Lockleaze | 4.16% |
| Hillfields | 3.86% |
| Knowle | 3.28% |
| Horfield | 3.15% |
| Frome Vale | 3.06% |
| Stockwood | 2.98% |
| Eastville | 2.96% |
| Bishopsworth | 2.93% |
| Ashley | 2.71% |
| St George Central | 2.65% |
| Easton | 2.56% |
| Windmill Hill | 2.56% |
| Brislington East | 2.48% |
| Westbury-on-Trym and Henleaze | 2.40% |
| Brislington West | 1.91% |
| Bishopston and Ashley Down | 1.88% |
| Bedminster | 1.86% |
| Stoke Bishop | 1.78% |
| Redland | 1.63% |
| Southville | 1.45% |
| Central | 1.38% |
| St George West | 1.27% |
| St George Troopers Hill | 0.97% |
| Clifton | 0.97% |
| Cotham | 0.53% |
| Clifton Down | 0.42% |
| Hotwells and Harbourside | 0.40% |



Equality, Diversity and Inclusion

CAMHS Quality Improvement Project – Improving Experience and Access for Black and Brown Young People

- Terminology that is used has been chosen by young people who are part of the Barnardos Black and Brown Mind Matters Group (BBMM) which is a service user participation group. We appreciate the debates around terminology but wished to honour the language chosen by young people
- Over that last year young people have produced a short film on CAMHS – to be released shortly
- Co-produced a Driver Diagram and key actions with CAMHS and other key stakeholders aimed at improving young peoples' experience and access to CAMHS
- Young People reviewed CAMHS scoring as part of the NHS England requirement to meet standards in the Equality Delivery Service
- Alongside the Community Development Lead for the project an Engagement, Access and Outreach worker has been appointed to support young people's and community engagement
- The project is aligned with the requirements to deliver the Patient Carer Race Equality Framework (PCREF) from April 2025
- BBMM group are to present to the Executive and Trust Board in February 2025
- Young people have co-produced Reflective Practice resources for CAMHS staff
- The project has been extended to include all protected characteristics



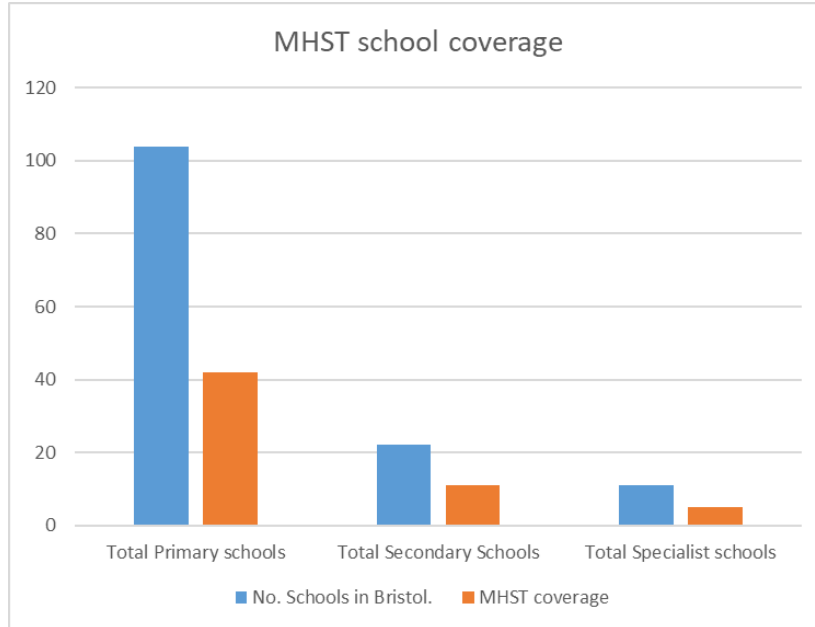
Asylum Refugee Clinic

Those in the asylum seeker and refugee (ASR) population have typically experienced multiple traumatic events before arriving in the UK and are at an increased risk of long term serious mental health problems without treatment.

- The asylum seeker and refugee clinic (ARC) is a CAMHS mental health service developed to treat children with symptoms associated with a post traumatic stress disorder (PTSD) diagnosis.
- Receiving on average 84 referrals per year and delivering more than the commissioned service expectations.
- ARC liaise with local partners and commissioners through strategic forums to support a joined up approach within this continually changing area of health and consider mechanisms to support this stretched service to deliver a long term sustainable service.



Bristol MHST coverage

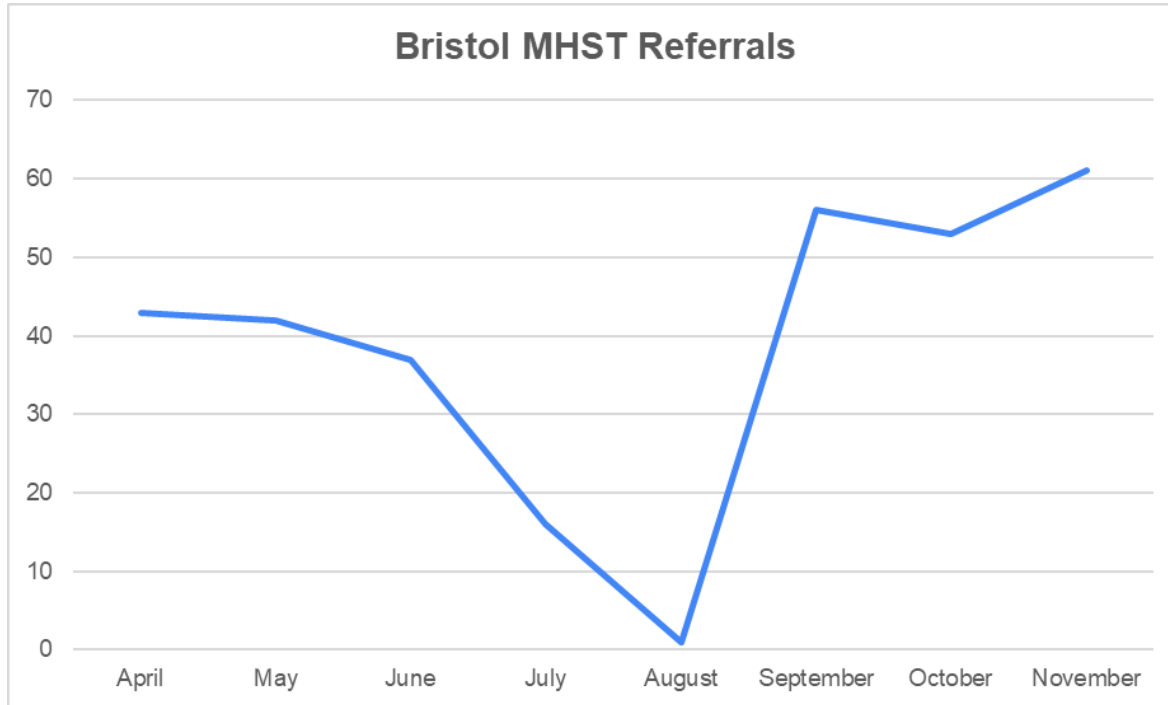


Additional 16 schools and 3 EMHP's will join from January 2025
Increasing our coverage to 64%

| | Curent schools covered by MHST | | | |
|----------------------------|--------------------------------|---------------|------------------|-----------|
| | South Bristol | North Bristol | East and Central | Total |
| All-through | 2 | | | 2 |
| Primary schools | 13 | 12 | 17 | 42 |
| Secondary schools | 3 | 5 | 3 | 11 |
| Specialist schools | 2 | 3 | | 5 |
| Alternative Provision (AP) | | | 2 | 2 |
| Post 16 | | 2 | | 2 |
| Total | 20 | 22 | 22 | 64 |

Bristol MHST reach

April to Nov 2024



| PRIMARY REASON FOR REFERRAL |
|-----------------------------|
| Anxiety |
| Attachment difficulties |
| Behavioural difficulties |
| Low mood /Depression |

64

Number of schools we're working in.'

134

Average No Children that receive monthly 1:2:1 support

1,146

Hours of 'Whole Schools Approach'

28,493

Total children reached

17+ Year old Transitions

New Enhanced Service for CAMHS Youth Transitions

- A new enhanced service has been created to support the transition of young people from CAMHS to post-18 adult mental health services and mental health services in primary care.
- A Bristol Youth Transition Practitioner in adult mental health recovery teams has been recruited and will oversee transitions across the three Bristol localities.
- Three Off the Record Youth Transition Workers have been recruited to support the transition to primary care and offer additional transition support to young people with post-18 mild and moderate mental health needs who do not meet the criteria for adult mental health services.
- The service is currently in a settling period and will officially launch in July 2025.



Riverside Update

Riverside Tier 4 General Adolescent Unit was closed at the end of January 2024, due to patient safety concerns. It remains closed.

Since closure there has been significant improvement work undertaken by the team:

Review of clinical model in line with new national service specification to meet changing needs of YP.

Developments to include increased provision for YP with Eating Disorder. This will reduce need for Out of Area admissions

Internal and external review and analysis of specific patient safety issues. Review commissioned by the South West Provider Collaborative due end of February which will inform further improvements.

Co-production: Service user, carers and wider stakeholder engagement and feedback. Including project with Barnardo's with YP who have previously been admitted to Riverside

Workforce: Leadership and Culture Development; Staff Training and Team Building



Impact of Closure

- Riverside continue to undertake access assessments for YP referred for admission
- 61 referrals since March 2024. 37 needed admission
 - 20 admitted to Tier 4 CAMHS units in Southwest region
 - 1 admitted to Tier 4 CAMHS unit out of Southwest region
 - 7 admitted to specialist Eating Disorder Unit
 - 5 admitted to Psychiatric Intensive Care Unit
 - 1 admitted to Low Secure CAMHS
 - 2 admitted to Specialist Children's (under 13) units
 - 1 admission to Great Ormond Street Hospital
- Wessex House, Bridgwater closed August 2024. Re-opening early 2025.
- AWP and SWPC commitment to re-opening Riverside

Looking ahead



- Improving CYP access to Mental Health Services
- Reopening of Riverside General Adolescent Inpatient Unit
- Crisis Line NHS 111 Transition (timeline to be confirmed)
- Continue to build on the learning and success of Community Eating Disorder Services
- Development of new Referral To Help 4-week target in 2025



Thank You

Any questions?

