

# Shelter's Big Conversation

Shelter's Commission on  
the Future of Social Housing

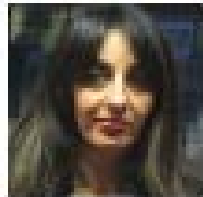
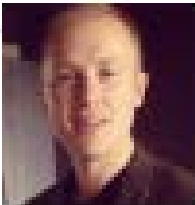
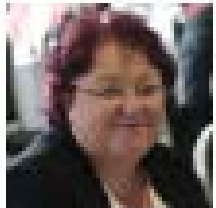
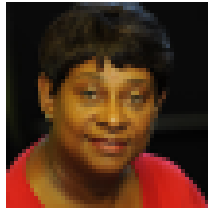
Shelter

# Our process



- Online consultation
- In depth interviews with social renters, private renters, people who are homeless
- Representative survey of 3,800 people including 1,100 residents of social housing
- Workshops with 100 people in 5 areas
- Call for evidence
- Events with service users, supporters and stakeholders
- Research, analysis, policy development
- 16 commissioners, and many long meetings!

# A diverse commission



- **Rev Mike Long**, Notting Hill Methodist Church near Grenfell Tower
- **Baroness Sayeeda Warsi**, Conservative
- **Ed Daffarn**, Grenfell United
- **Dr Faiza Shaheen**, Director, CLASS
- **Ed Miliband MP**, Labour
- **Baroness Doreen Lawrence**, Labour
- **Lord Jim O'Neill**, former conservative minister
- **George Clarke**, TV presenter and architect
- **Samia Badani**, Chair, A4G Residents Advisory Panel near Grenfell Tower
- **Raji Hunjan**, Zacchaeus 2000 Trust
- **Rob Gershon**, Housing activist and social tenant
- **Gavin Kelly**, Chief Executive, Resolution Trust
- **David Tovey**, Artist
- **Jo Miller**, Chief Executive, Doncaster Council
- **Ryan Shorthouse**, Chief Executive, Bright Blue
- **Miatta Fahnbulleh**, Chief Executive, New Economics Foundation



Shelter's Big  
Conversation

The future of social housing

**Over 31,000 responses**

**There is not enough social housing**

Concerns about who can  
and who can't access  
social housing

**Many residents in  
social housing feel  
powerless**

**More affordable than renting  
privately, but sometimes not  
affordable enough**

**Social housing  
creates strong  
communities**

**Worry about the future  
for social housing**

# What do we recommend?

**3.1m**  
more social  
homes



a historic renewal of social housing



social homes providing both security for those in need, and also a step up for young families trying to get on and save for their future



introduce a new regulator to improve standards

**Reform  
renting**



give social renters a stronger voice both locally and nationally



Shelter



- Reforms to social renting
- Reforms to private renting
- Much more investment in social housing
  - Provide affordable, secure social housing for all those in need
  - Increase overall supply of housing
  - Create great communities
  - Economic costings and wider research

# Getting our message out

## Opinion Housing

Jim O'Neill and Ed Miliband

Mon 23 Jul 2018 15.00 BST

   3,738 650

## Social housing used to be a national asset. Let's rebuild that attitude

Our commission has revealed the scale of working people who cannot get a home. This shame on Britain is entirely avoidable



HOUSING 31 AUGUST 2018

## Why I'm taking a stand for social housing

The former leader of the Labour Party explains why the housing crisis has reached a decisive point.

 The **commission** also includes @Ed\_Miliband, @SayeedaWarsi, @faizashaheen, @DLawrenceOBE, Lord Jim O'Neill, Edward Daffarn, @GavinKelly1, @DavidTovey1975, @SamiaBadani, @jomillerdonny, @RajiHunjan, @RyanShorthouse, @Miatsf and @MrGeorgeClarke.

Learn more  [shltr.org.uk/gau](https://shltr.org.uk/gau)



## Doreen Lawrence: Grenfell tenants faced 'institutional indifference'

The campaigner, whose son's murder led to an inquiry, says the stories of the fire's survivors have parallels to her own experience



## Opinion Social housing

Sayeeda Warsi

Sun 29 Apr 2018 00.05 BST

   634 126

## Social housing is not just a safety net for the few

With more and more people made homeless or forced to pay excessive rents, the charity Shelter is investigating how to help them



**Until there's a home for everyone**

**Thank you**

**Shelter**

Wednesday, 13 March 2019