



# Community Toilets Scheme

Lindsay Hay

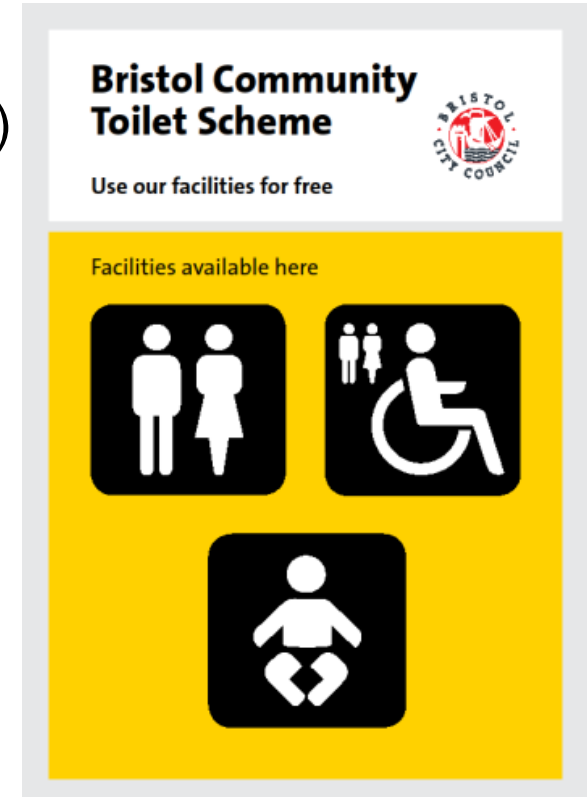
Neighbourhood Services Manager



# Presentation Contents

Request for further information:

- What are the Community Toilet Scheme (CTS) standards?
- How is the CTS communicated to potential providers and users?
- What time are the toilets in the scheme available?
- Is there any work on identifying gaps?



# What are the CTS standards?

All members sign up to:

- Allow the public unrestricted and unobstructed access
- Maintain and regularly inspect toilet to ensure clean and hygienic conditions at all times/adequate supply of soap etc.
- Well signposted within the premises
- Well signed outside using CTS signage
- Allow access for BCC or its agents to inspect
- Provide information of opening times and change
- Participate until 2023

# Access standards?

## Comply with Environmental Access Standards 2011

Non-slip floor covering.

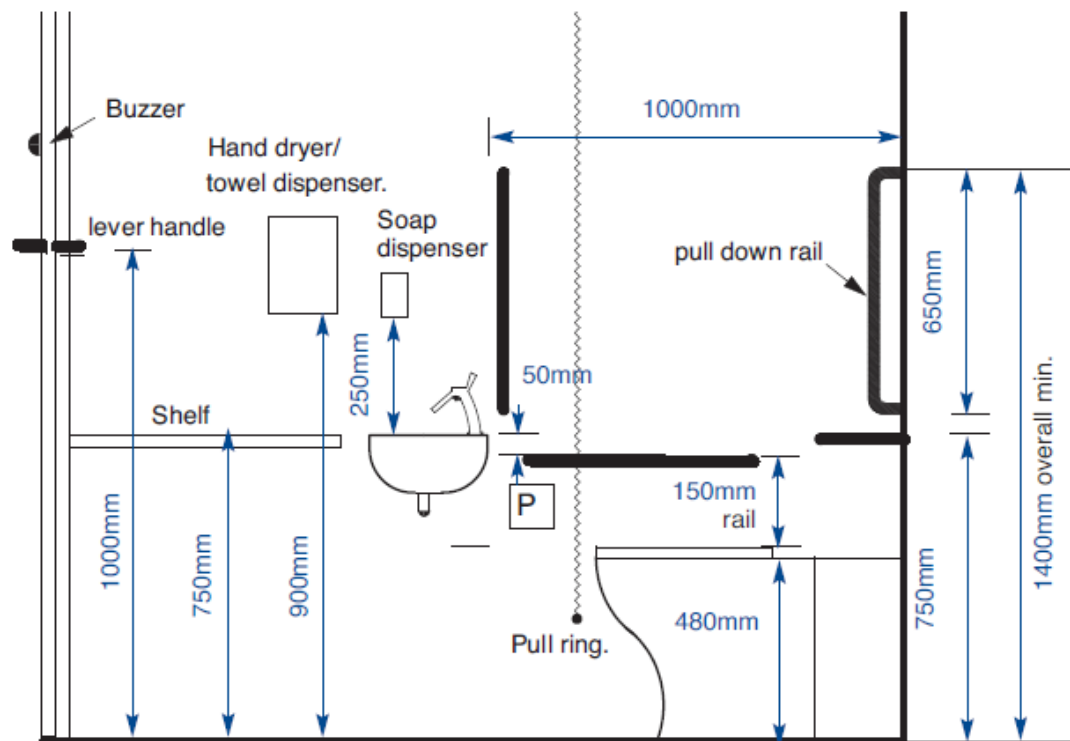
Accessible locks with large catch

Colour contrasting skirtings

No reflective floor or wall surfaces

BPAC are 'mystery shopping' to check accessibility

'UNISEX' WHEELCHAIR ACCESSIBLE TOILET- This layout may be set out to either hand. Where more than one, provide both left and right handed layouts.



# How is the CTS communicated to potential providers?

## Direct approaches by officers to:

- Participants of the 2011 City Toilets Scheme and local schemes such as the Bedminster map.
- Venues identified by citizens, councillors and community groups
- Commercial chains including: Weatherspoons, Asda, McDonalds, Starbucks, Subway
- Medical and leisure centres
- City Centre BID

## Direct approaches by councillors and Bristol Ageing Better (BAB)

Email messages sent to all businesses and BIDS, partners, community groups

**BCC website**

- **Local radio**



# How is the CTS communicated to potential users?

## BCC website

[public toilets map](#)

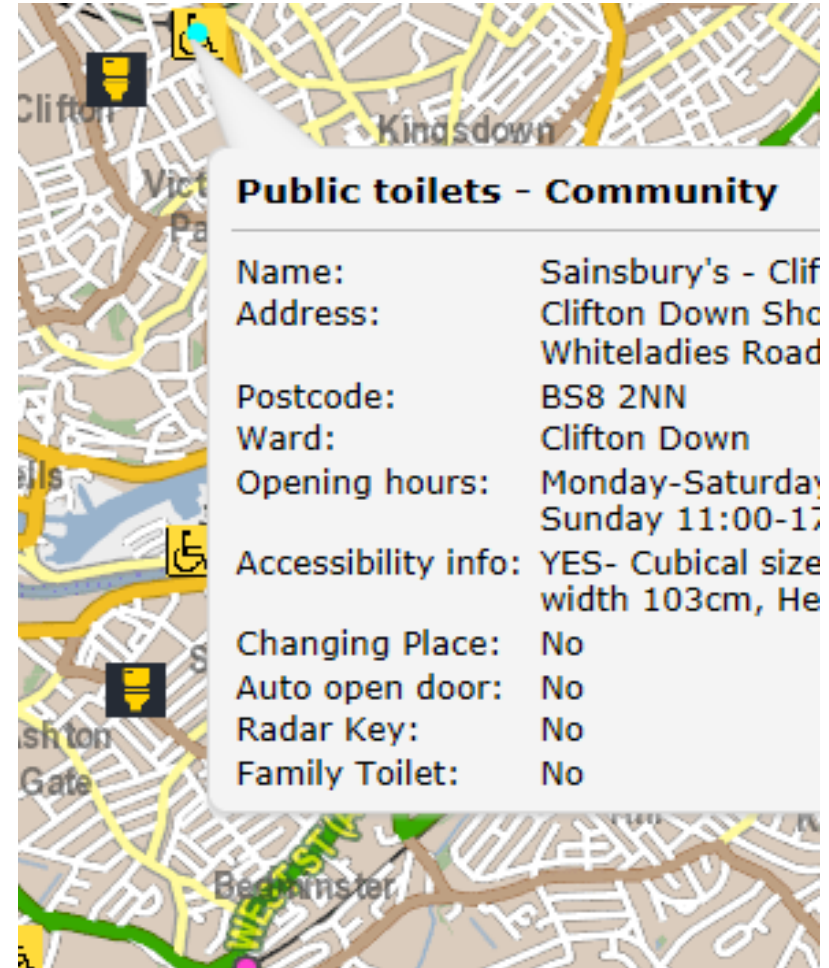
**Legible City-** city centre paper map  
CTS in next edition

**Great British toilet map-** auto  
updated with new venues. Smart  
phone app. available

**Bristol Ageing Better** local  
information sheet being produced

Homeless Connect website –  
<https://bristolhomelessconnect.com>

## Local radio



# What time are the toilets in the scheme available?

## Public toilets closed

- **None** open 24 hours (except 2 Victorian urinals)
- **None** open after 20:00
- **3** toilets open 6 days a week earliest opening 06:00 /latest closing 19:00
- **9** toilets open 7 days a week earliest opening 05:00 /latest closing 20:00 (Shirehampton)

## Community Toilet Scheme

- **One** open 24 hours
- **44** open after 20:00
- **55** toilets open 6 days a week earliest opening 5.30/ latest closing 02:00
- **35** toilets open 7 days a week earliest opening 05.30/latest closing 02:00

# Is there any work on identifying gaps?

## Map of toilet locations shows a good news story

Exceeded Cabinet commitment to provide :

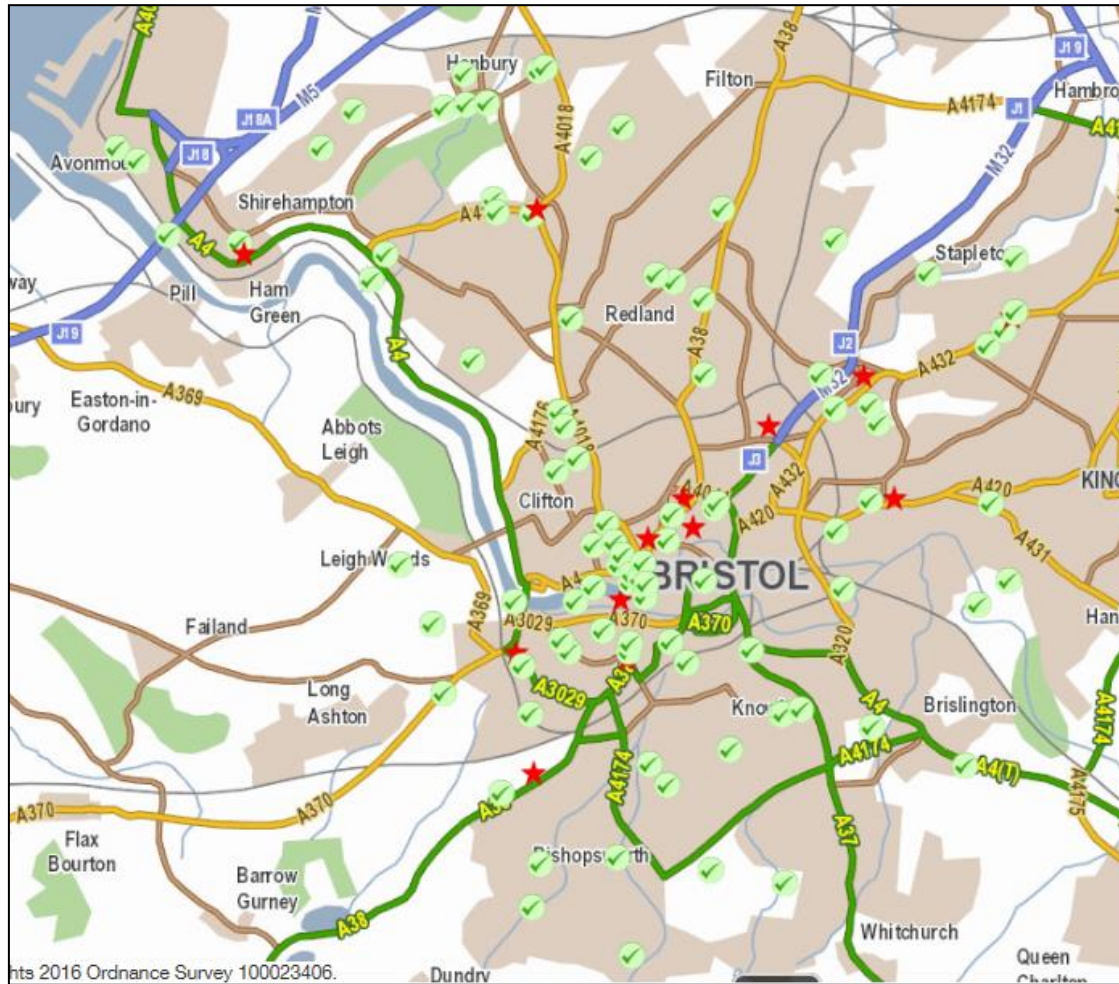
- at least one accessible toilet near to a closed council run toilet.
- 36 Community Toilets
- St George/Church Rd new facilities from Easter

City-wide view

- At least one community toilet in 26 wards
- Map shows extensive coverage through CTS (96 participants)
- Ward councillors , community and voluntary groups are encouraged to recommend CTS to businesses in areas where they feel there are gaps.



# Is there any work on identifying gaps?



# Community Toilet Scheme – success story

- The Bristol CTS is considered one of the most successful nationally by the British Toilet Assoc.
- ‘Use Our Loos ‘campaign and other local authorities regularly approach Neighbourhood Services for advice
- The CTS has developed well given the available officer resource to manage and promote it (0.2FTE)
- Many other venues in Bristol do have toilets that are available for the public to use but don’t wish to advertise this

## Going Forward:

Our aim is to get to 100 CTS and to maintain this level with the support of businesses, ward councillors, community & voluntary groups and local people.