



strengthening
families

Strengthening Families

People Scrutiny Commission

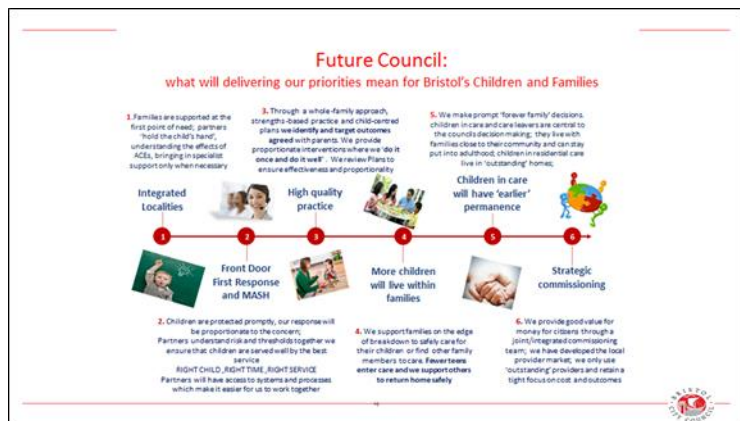
14 October 2019



Programme Vision

Vision for Children's Service: children and families will receive the right support and care at the right time by the right service in the right place. Children and young people in care will be cared for within families and their communities.

Statement of Intent for the Programme: Make cost savings whilst holding our ambition to improving outcomes, commissioning and delivering seamless quality services and keeping "children and families" at the heart of what we do



Recap:

A range of measures designed to manage demand, manage supply and create the conditions to enable high quality social work practice to flourish.

- *Reduce overall number of children in care*
 - *Reduce number of teenagers entering care*
 - *Increase in-house foster care placements*
 - *Reunification of older children in care with their families*
 - *Reduce social worker caseloads*
 - *Reduce number of children placed out of authority*
 - *Increase number of children exiting care via adoption and special guardianship routes*
 - *Secure funding to build a new model of smaller children's homes*
 - *Increase funding from CCG for complex high-cost health placements*
 - *Increase capacity to deliver supervised contact*
 - *Mobile technology for social workers (Smartphones and Mobile App)*
 - *Bristol is an 'ACE aware' city*
 - *New telephony system for MASH*
-

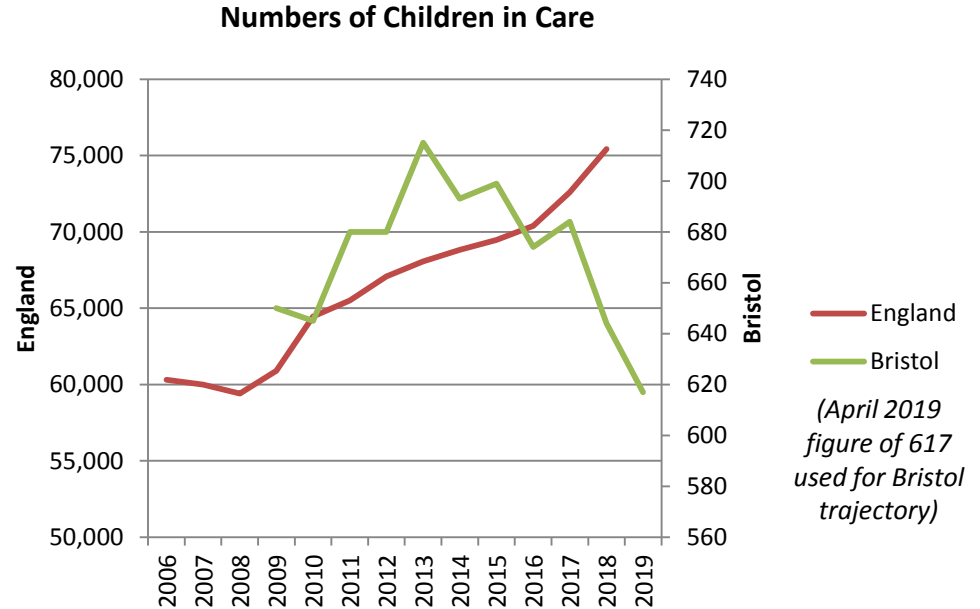
Key Achievements:

A range of measures designed to manage demand, manage supply and create the conditions to enable high quality social work practice to flourish.

- ✓ Reduce overall number of children in care
 - ✓ Reduce number of teenagers entering care
 - ✓ Increase in-house foster care placements
 - ✓ Reunification of older children in care with their families
 - ✓ Reduce social worker caseloads
 - Reduce number of children placed out of authority
 - Increase number of children exiting care via adoption and ✓ special guardianship routes
 - ✓ Secure funding to build a new model of smaller children's homes
 - Increase funding from CCG for complex high-cost health placements
 - ✓ Increase capacity to deliver supervised contact
 - Mobile technology for social workers (Smartphones and Mobile App)
 - Bristol is [working towards being] an 'ACE aware' city
 - ✓ New telephony system for MASH
-

Bristol/England/Core Cities comparison

- *2018/19 Children in Care Budget v Outturn comparison is imminent*
- 2017/18 Bristol was one of two Core Cities that did not overspend for Children in Care
- Section 251 benchmarking with Statistical neighbours shows that Bristol has the third lowest (3/11) unit cost for 2018/19 for both children's safeguarding and children in care expenditure



Programme Closure

- End-to-end review of programme portfolio undertaken and closure plan drafted
 - 3 projects will extend beyond programme closure:
 - Agile Working for Social Workers (transfers to IT Transformation Programme)
 - Agreement on High Cost Health Calculator (negotiations ongoing)
 - New Model of Smaller Children's Homes (has it's own Project Board)
 - Controlled and documented transfer of benefit realisation to appropriate forums
 - Lessons Learned Workshop scheduled for November
 - Programme Closure in Audit's forward plan
-

What next ...

- Build on programme's foundations
 - Continue benefits delivery (conceived as a five year programme)
 - Achieve sustainable resourcing / sustained outcomes
 - Ambitious for children and families
 - Challenge and co-construction
-