

Tackling homelessness in Bristol



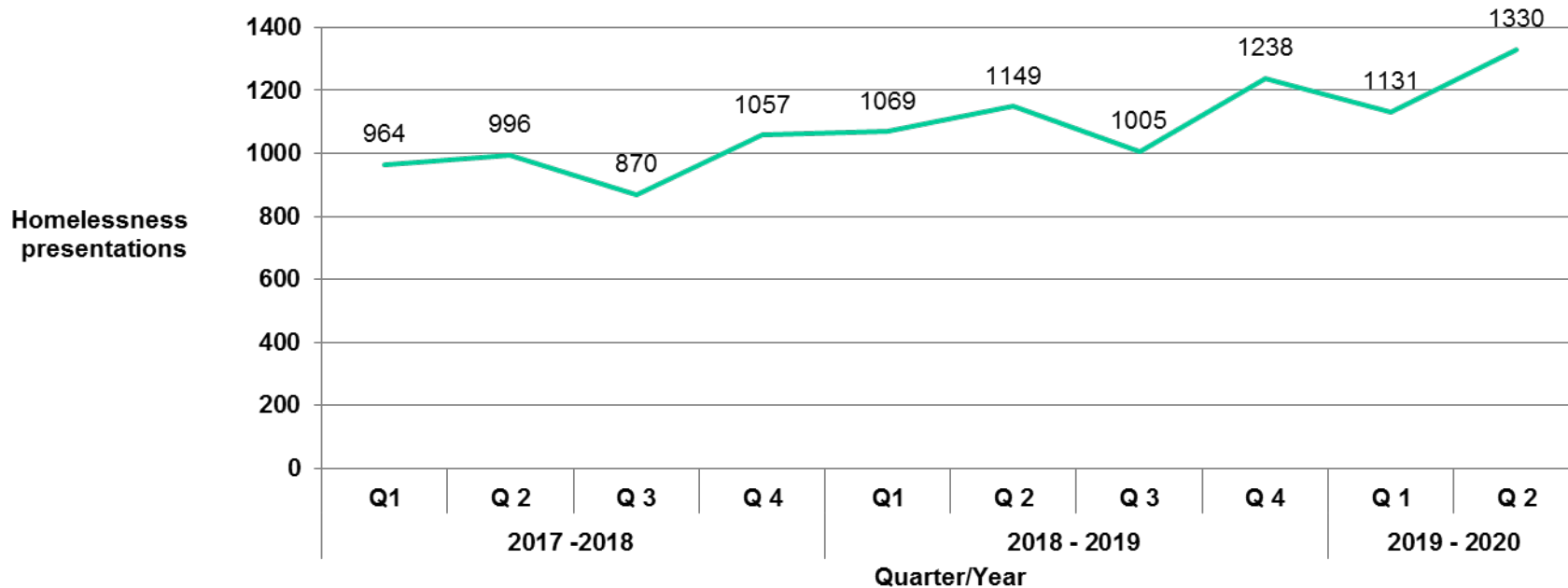
Content

- Demand & levels of homelessness
- Housing Supply
- Temporary Accommodation
- Bristol Homelessness Action Partnership
- Homelessness strategy
- Need for more affordable housing
- Increase in shelter provision
- Early intervention & prevention
- Understanding complex systems
- Street volunteer groups
- Homelessness communications group



Increasing demand

Number of homelessness presentations to BCC



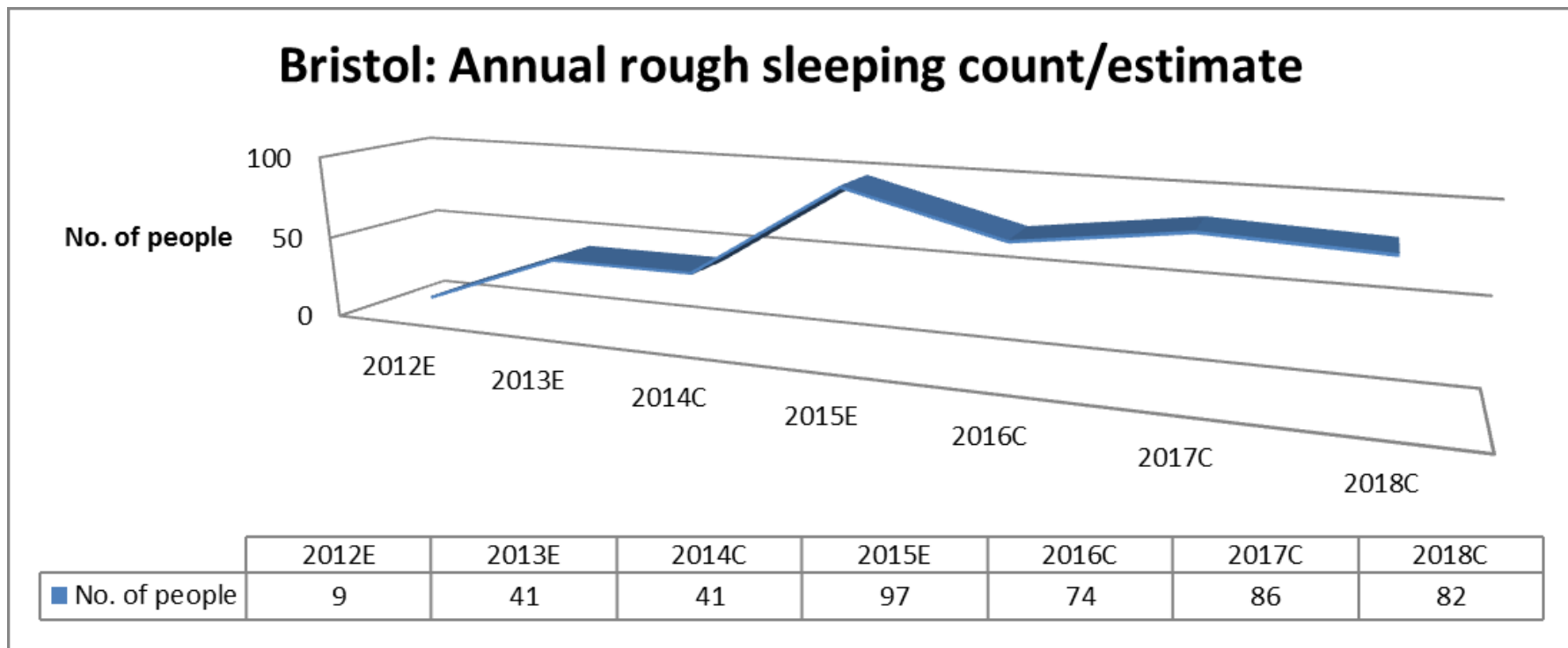
- The number of households who are homeless or threatened with homelessness approaching BCC has increased by 25% since 2017

Increasing demand

- The number of households with a main homelessness duty has increased from 500 (31.3.19) to 588 (30.9.19) in 6 months
- Working with increased number of single people at prevention and relief duties – 219 compared with 181 families (30.9.19)
- The number of households where we have prevented or relieved homelessness has increased by 7% but not kept pace with increase in approaches
- Increase in households with complex needs

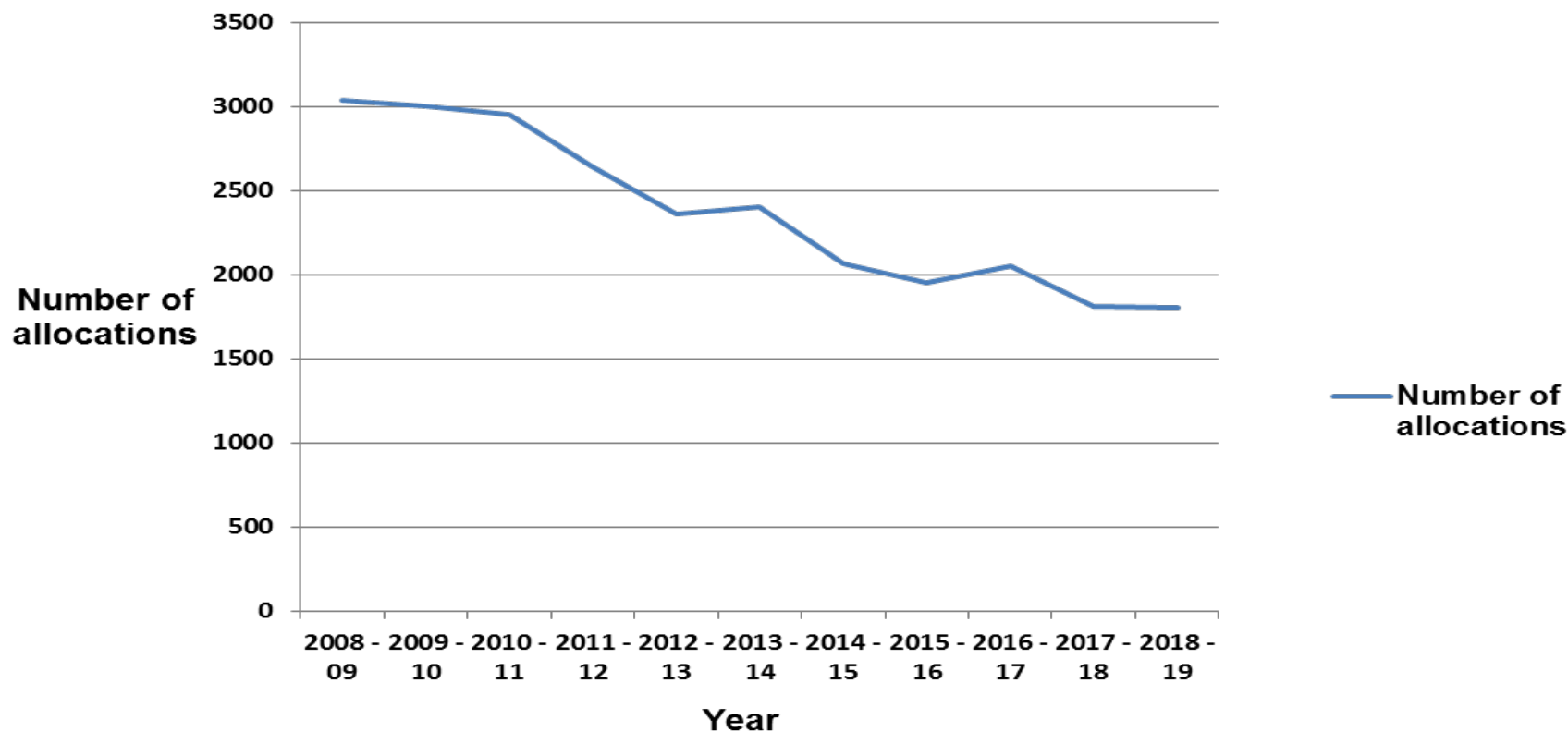
Rough sleeping

- Annual snapshot counts are the governments preferred method of measuring rough sleeping
- This does not give the full picture of the level of rough sleeping in Bristol
- The number of individuals that the outreach service has contact with is increasing and is expected to reach 1300 in 2019 up from 956 in 2018



Housing Supply – Social Housing lettings

HomeChoice Bristol allocations 2008 - 2019



- Reduced from over 3000 a year to 1800 a year

Housing Supply

Social Housing lettings to households who are homeless and those moving on from supported housing 18/19 & 19/20

	18- 19	Q1 19-20	Q2 19-20	Q3 19-20 (up to 12.12.19)	YTD 2019-20	Projected 19/20
Total Allocations	1803	408	478	325	1211	1700 (-103)
Total allocations to Homeless households	554	112	133	112	357	490 (-64)
Total allocations to households moving out of supported housing	173	34	34	31	99	136 (-37)

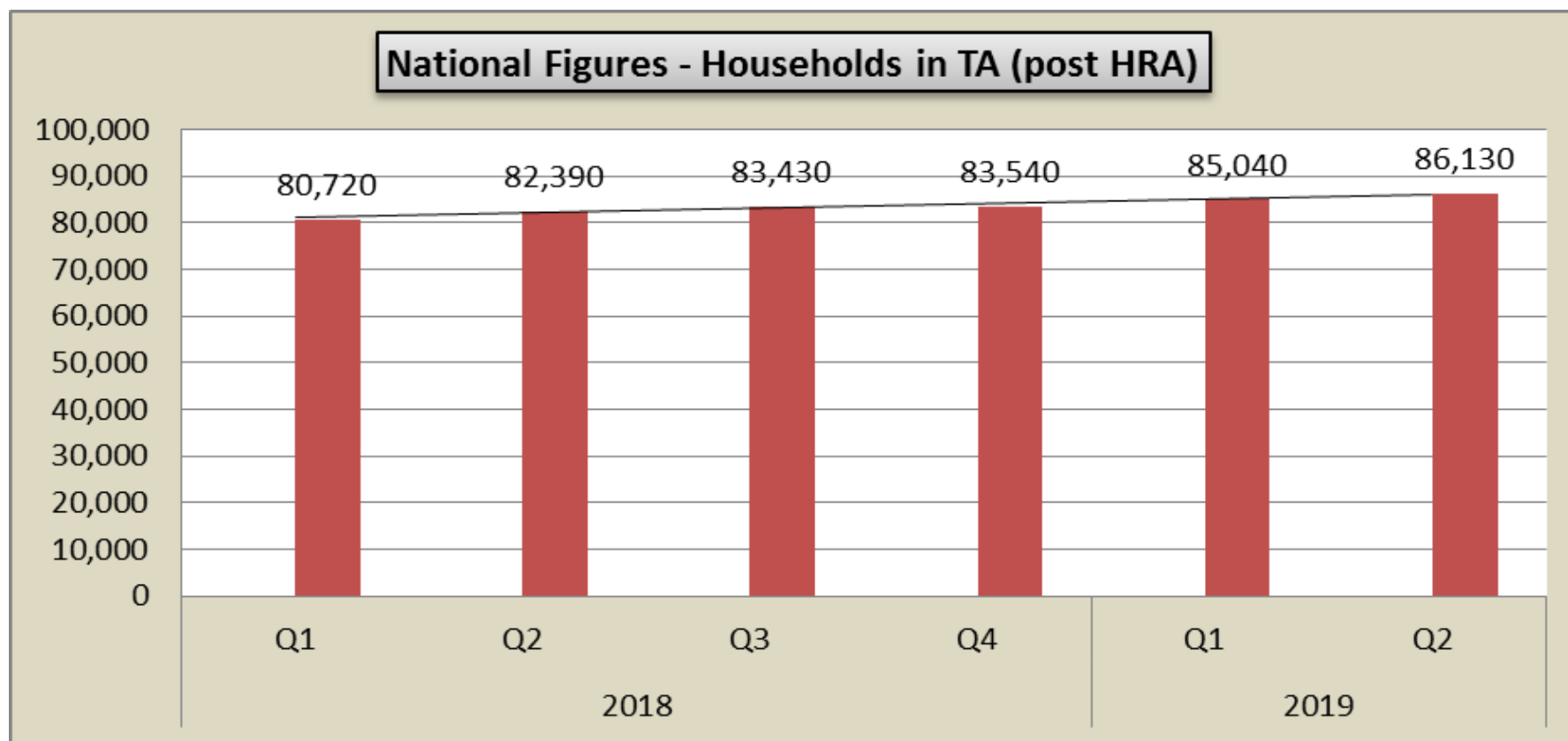
- Figures are projected but represent a 6% reduction in total lettings in 19/20 compared with 18/19
- Projected 14% reduction in lettings to households who are homeless/moving out of supported housing in 19/20 compared with 18/19

Housing Supply

- The number of re-lets is reducing, offsetting any increase (so far) in new build
- The total number of lettings are at the lowest point ever. There were 3000 lettings p/a 10 years ago
- The impact of tenancy pre-assessment, affordability assessments and rent in advance to be established
- The number of placements in affordable private rented tenancies will increase to approx. 200 in 19/20. More needs to be done

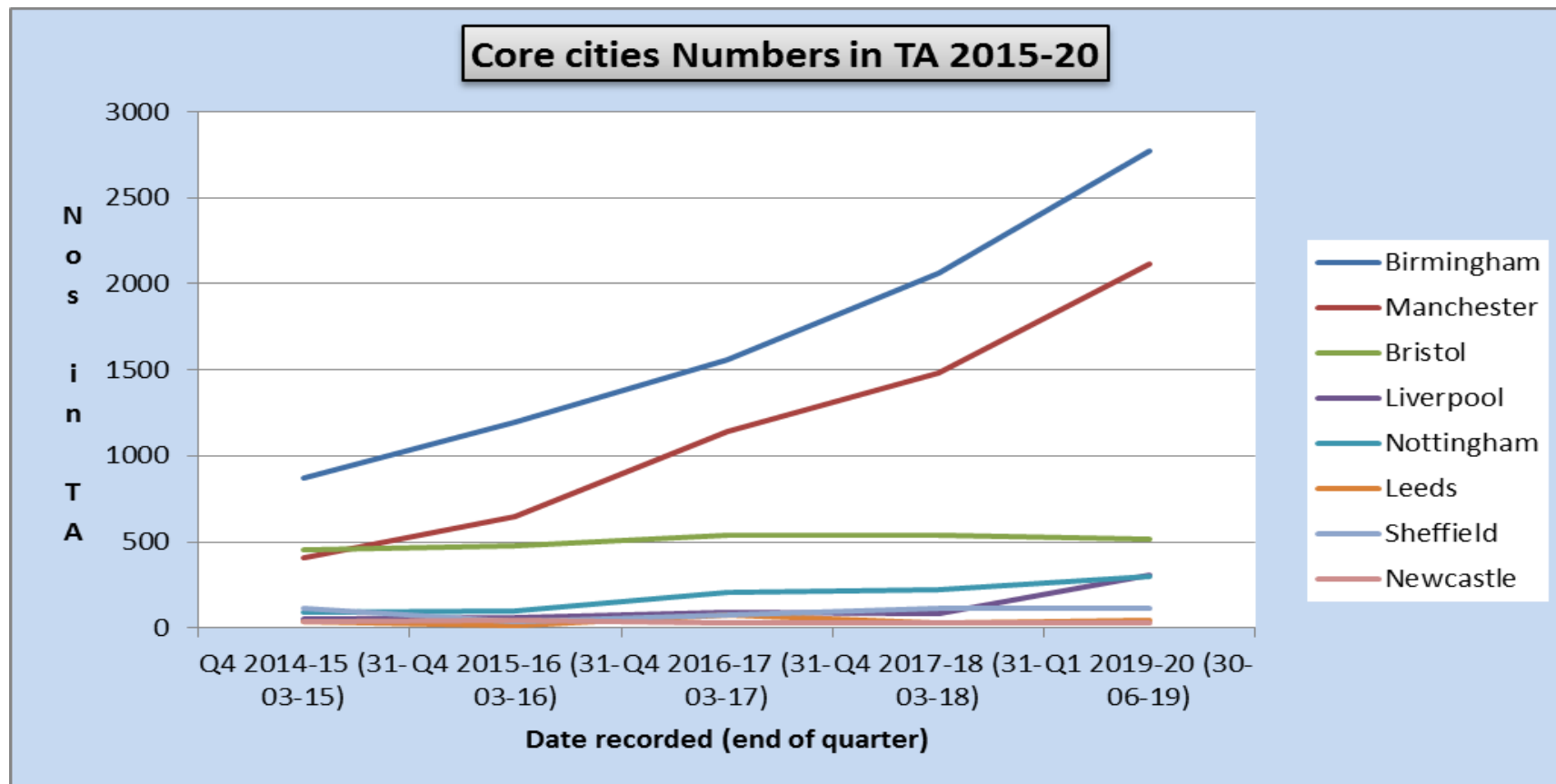
Temporary Accommodation (TA)- national

- Nationally the use of TA is increasing
- Up 6.7% since April 2018



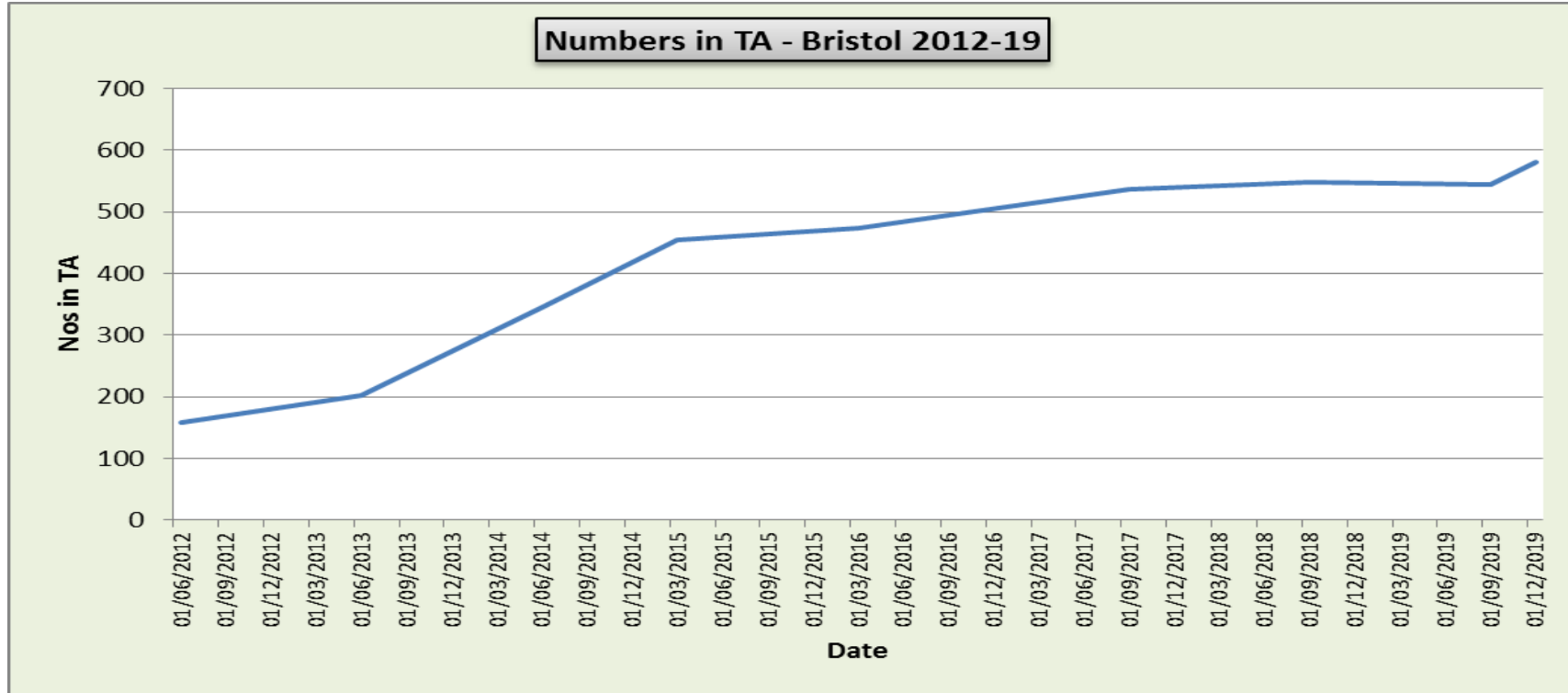
Temporary Accommodation – Core Cities

- Manchester & Birmingham significant increase
- Bristol hovered between 450 and 550



Temporary Accommodation - Bristol

- Recent increase due to rise in demand and reduction in move on
- 31/12/19 – 585 (estimate).



Temporary Accommodation- Bristol

In 2019 compared with 2018 there was a

- 6% increase in families placed in TA
- 50% increase in single people placed in TA

Reasons for Homelessness and TA booking

- Families - Top 3 – Private rented eviction, Told to leave by family/friends & Domestic abuse
- Singles – Top 5 – Rough sleeping, Prison discharge, Hospital Discharge, Domestic Abuse & Told to leave by family/friends

Homelessness Strategy Partnership Approach

The Bristol Homelessness Action Partnership will deliver the City's Homelessness and Rough Sleeping strategy

Recently re-launched partnership providing leadership on homelessness in Bristol. Working with a broad range of partners committed to reducing homelessness

- Homelessness services
- Housing providers
- Social Care & Health
- Criminal Justice
- Advice services
- Education



Homelessness and Rough Sleeping Strategy 2019 - 2024

The strategy was developed by Bristol Homelessness Action Partnership and agreed in September 2019 following significant consultation. There are 5 strategic priorities:

- Tackling rough sleeping
- Prevention and early intervention
- Improving health and wellbeing
- Delivering equality, diversity & inclusion in all services
- Working in partnership



Increase in affordable move on

- We will benefit from an increase in affordable new build in 2020, but in itself this is not enough
- Need to compliment with an increase in private rented accommodation at LHA, including shared accommodation
- We will explore joint ventures and other long term investment opportunities to increase supply
- We will increase move on out of Bristol where it meets household needs
- We will explore innovative models of move on accommodation working with Bristol Housing Festival
- We will work with Registered Providers to evaluate shared housing models

Increase in shelter provision

- Our focus has and will continue to be been on more affordable long term accommodation to tackle rough sleeping
- However, with the number of people coming onto the streets increasing and the length of time people spend on the streets increasing we also need to increase our shelter provision in the short/medium term
- Funding for additional shelter provision is part of a bid to MHCLG and we will hear the outcome of that bid by end of January 2020
- Further expansion of shelter provision and guardianship provision on meanwhile sites is being explored with partners and BCC services

Early Intervention & Prevention

- Increasing early intervention & prevention is a priority for Bristol Homelessness Action Partnership
- There are great examples of early intervention, from advice agencies to floating support services helping to sustain tenancies.
- More can be done by getting help to those that need it earlier. The partnership will set up a group to co-ordinate activities across Bristol including community outreach services.
- We will be delivering a publicity campaign where one of the key messages is, “to get help early”.
- We will be developing our service to support private landlords in sustaining tenancies

Data driving services

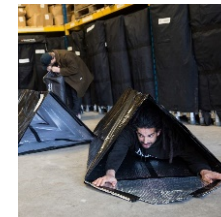
- A priority for the Partnership is to make better use of data to inform service delivery
- Fully understanding the systems we work in will enable us to design and deliver interventions to prevent homelessness, provide services to meet needs and make effective use of resources e.g supported housing
- We will be learning from those organisations that use data well and will be supported by Golden Key
- Priorities for areas of research will be established

Street Volunteer Groups

- High number of volunteer/faith groups active in Bristol
- Tend to provide food, bedding and tents
- Very active on social media – info not always accurate
- Little coordination or engagement – no shared approach
- Occasional disagreements between groups
- New groups forming frequently



Churches Together in Clifton, Cotham and Redland



Mayor-led initiative to bring groups together and reduce duplication began in 2019, now being led by Revd Canon Martin Gainsborough
Bristol Homelessness Action Partnership



Homelessness Communications Group

- Multi-agency group leading on shared messaging about homelessness with a focus on rough sleeping

Achievements:

- Common “notes to editors” for press releases
- Comms plan for responsive and annual messaging

Current priorities:

- Changing the nature of discussions on social media
- Developing and publishing a flow of accurate data
- Communicating with existing and new groups
- Creating a narrative to focus attention on priority areas