



CHILDREN

ADULTS

COMMUNITIES

Report to Scrutiny

Keeping Bristol Safe Partnership

- Principles underpinning the new safeguarding arrangements
- Outline of structure, including key roles, responsibilities of partners with particular reference to Keeping Communities Safe
- Progress on arrangements for future scrutiny in relation performance targets and measurable outcomes

The KBSP Partnership was formally constituted on:

9th September 2019

To deliver relevant statutory duties as follows:

- To safeguard and promote the welfare of children as required by The **Children Act 2004** and supported by the statutory guidance, **Working Together to Safeguard Children 2018**
- To help and protect adults with care and support needs at risk of abuse or neglect as defined by the **Care Act 2014** and supporting statutory guidance
- To reduce crime and disorder, substance misuse and re-offending as required by the **Crime and Disorder Act 1998**
- To cooperate to improve the wellbeing of children and young people as defined in **The Children Act 2004**.

Papers were presented to **Cabinet** on:

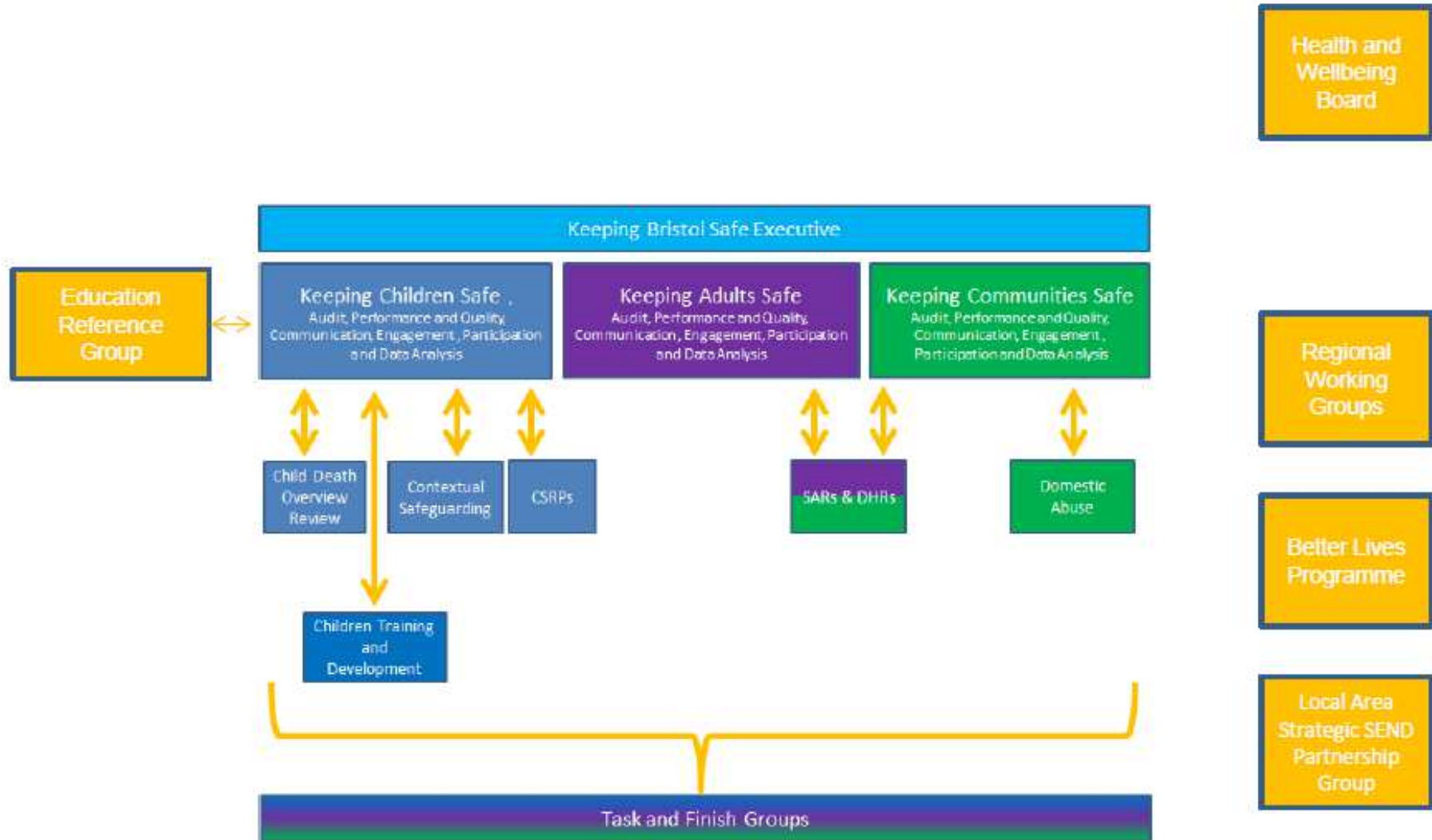
- **18th June 2019**

- To agree the proposal to bring together safeguarding arrangements in Bristol
- To designate the role of Executive Director, People as the lead representative for the Local Authority
- Present EQIA

- **3rd September 2019**

- To approve the constitution and governance arrangements
- To authorise the Executive Director, People in consultation with Executive Members for Children and Young People, Adults and Communities to receive and approve any amendments to the constitution following the annual review by the Executive.

KBSP Overarching Structure



Responsibility of the Executive

Lead representatives or their representatives (as outlined on page 3 of the Constitution) have the authority to:

- Make decisions on behalf of their organisation
- Commit them on policy, resourcing and practice matters
- Bring a perspective from a sector involved with children, adults with care and support needs at risk of abuse or neglect, victims of crime, people with offending behaviour or wider community safety partners
- Advise on communication and implementation of KBSP priorities within their sector.
- Disseminate information between the Executive and their agency including its commissioners or contracted services, and for identifying, monitoring and evaluating any necessary actions
- Commit to report to the lead representatives who are accountable for the quality of services provided in the city to children, adults with care and support needs at risk of abuse or neglect, victims of crime, people with offending behaviour

Business Delivery and Performance Groups

There are three Business Delivery and Performance Groups, leading on delivery of KBSP priorities:

- **Keeping Adults Safe**
- **Keeping Children Safe**
- **Keeping Communities Safe**

There will be also be **Statutory Review Groups**

(Child Safeguarding Practice Review / Safeguarding Adults Review / Domestic Homicide Review)

- Ensure single agency and partnership work to protect children, adults and communities is coordinated and effective
- Shared focus on service delivery, early intervention, prevention and commissioning arrangements
- Action and task orientated, forward thinking and provide theme specific guidance and challenge to safeguarding partners
- Report on **performance and delivery** of plans to the Executive.
- Membership includes statutory partners, relevant agencies, commissioners and providers. Each group is chaired by a senior leader from a statutory agency.

Performance Reporting, Oversight and Scrutiny

- To ensure robust scrutiny, Partners agreed to appoint an Independent Chair with specific chairing functions that emphasise the scrutiny and challenge roles
- The Local Arrangements (Appendix 2) also establish an Accountability Oversight Group, formed of Cabinet Members from Bristol City Council, the Police and Crime Commissioner and a representative of the Board of NHS Bristol North Somerset South Gloucestershire Clinical Commissioning Group (BNSSG CCG), who will meet with members of the Executive three times per year to receive a report on the effectiveness of the new safeguarding arrangements
- As the democratic body with statutory duty, Bristol City Council Executive Director of People will, on behalf of the Executive, report to the relevant scrutiny commissions of BCC, namely People and Communities, on an annual basis to enable the commissions to review the work of the Executive and delivery against the strategic priorities
- The Independent Chair does not hold the independent scrutiny role as defined in Working Together 2018 for children's safeguarding arrangements.

Reminder ...

These are **governance arrangements**

- Reporting concerns about a child or adult or community have not changed and can be done by contacting:
- **First Response** to make a referral about a child on 0117 903 6444 or <https://www.bristol.gov.uk/social-care-health/reporting-concerns-about-a-child-first-response>
- **Care Direct** to make a referral about an adult on 0117 922 2700 or <https://www.bristol.gov.uk/social-care-health/adults-and-older-people>
- **Avon and Somerset Police** to report a crime, incident or anti social behaviour by accessing <https://www.avonandsomerset.police.uk/report/> to be signposted to the correct pathway