

Neighbourhoods & Communities

Division: Commercialisation, Citizens & Share Holder Liaison
Department: Resources

Overview & direction of travel

Communities

Neighbourhoods & Communities

Slide 1



Neighbourhoods & Communities

- Established in 2018
- Change of emphasis: from council-led to community development & collaboration
- 2 teams: Community Development (18 FTEs) and Community Resources (4 FTEs)



Community Development approach

Starting point....

neighbourliness , citizen action is part of city life.

and

innovation and vitality is powered by:

- the people, in all our diversity
- unique histories and cultures of neighbourhoods
- a wealth of small & large businesses & community organisations

Leadership Role of Councillors

- Allowance of £200 p.a. per councillor to enable community meetings/events
- 30 (of 34) wards receive the funding
- Last year (18/19) over 2300 residents took part in 70 meetings
- hosted by 18 community organisations
- A space for communities to work with local councillors and influence decisions about Community Infrastructure Levy (CIL)



Community Development Team

- 80% neighbourhood 20% citywide
- 10 priority neighbourhoods
- National & international reputation for asset based community development
- Our offer, where we work

<https://www.bristol.gov.uk/people-communities/get-involved-in-your-community>



Community development aims to nurture and maximise what's strong towards connected, inclusive, self-determining communities



Communities

Neighbourhoods & Communities

Slide 6



5 community building principles

1. **Equity & inclusion**
2. **Place-based**
3. **Asset-based**
4. **Human connection**
5. **Citizen-led**

Community Development Process

Connections are made across the neighbourhood

People with interests, skills or passions

People connect with shared interests

THRIVING NEIGHBOURHOOD

Taking action together

We have a voice

We take action

Lasting change

We share our stories

Connect to local assets



Communities



IMPACT NEIGHBOURHOODS - 19/20 output

6104 conversations to discover

Community Development Process

Neighbourhood connection maps

Connections are made across the neighbourhood



People with interests, skills or passions

783

People connect with shared interests

THRIVING NEIGHBOURHOOD

Lasting change
We share our stories
We have a voice
We take action



363 people

Taking action together

70 digital inclusion

19 Businesses



2096

Connect to local assets



Stories

Hartcliffe

Hartcliffe and Withywood Community Partnership and Bristol City Council's Community Development Team



People Power Unconference

70 citizens

City connects - St Judes meets Stoke Bishop; Knowle West meets Oldbury Court

All ages & backgrounds

All taking action with others

Many first-timers

An exciting space to learn and network

'This is amazing day, I think all people who has attended all love and passion about communities.'

Sara

'This is to thanks you and your colleagues for organising such inclusive and unifying event'

George



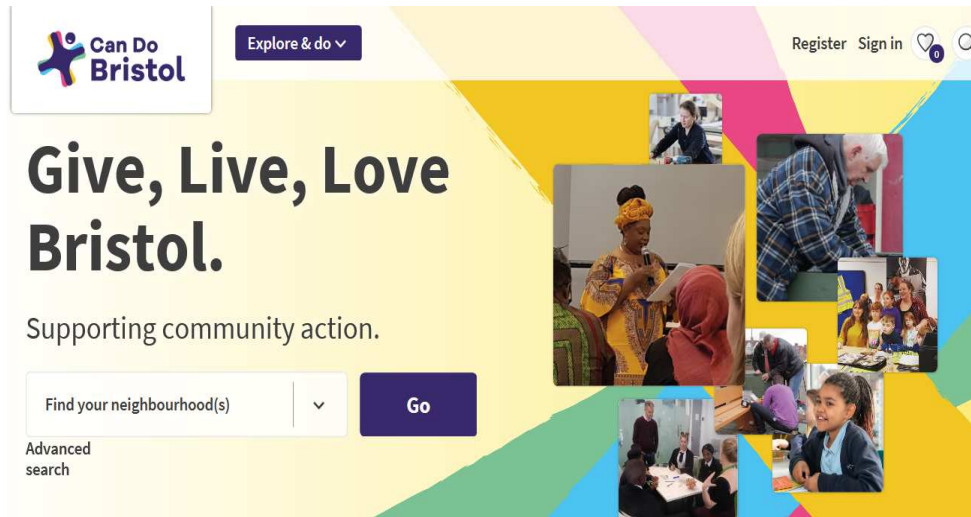
Communities

Neighbourhoods & Communities

Slide 11



Social Action



Working with
over 20
partners to
inspire the
biggest ever
year of
community
action

Communities

Neighbourhoods & Communities

Slide 12



Bristol Reading in Primary schools

- 300 volunteers across Bristol supporting 1,000 primary school children
- £60k investment from NESTA
- Part of Cities of Service UK network



Growing the Power of Communities

‘If we are to give real hope and create an inclusive city that empowers people to be successful we need to transform this council and reinvent what it does’.

Marvin Rees, Mayor

‘Everyone can play their part in powerful, connected, inclusive neighbourhoods with access to the things needed for a good life.’

Bristol One City Plan

The Opportunity ...

- Citizens and communities want to get involved, take a lead, realise creative ideas.
- There is a wealth of experience, expertise, ideas, passions which can help to solve the big challenges
- The power of communities is an amazing energy source – it will grow if we nurture it.
- We will have far greater impact if we combine the energy and resources of BCC with the energy and resources of communities.

Growing the Power of Communities

Friends of Cottle Road Park, Stockwood - keen to build on the energy and do something positive in the school holidays. They had fun planting 2000 bulbs.

+ neighbourly connections + out doors fun + all ages + the bulbs needed planting (time saved) + dialogue between residents and parks + trust built

Great job Friends of Cottle Rd Park – thank you



How can we do more of this kind of thing?

Communities

Neighbourhoods & Communities

Slide 16



The Challenge

Very challenging times: increasing demand & less resource.

Resources focused on meeting acute needs NOW

BCC systems rooted in transactional and top down relationships

People who experience the greatest inequality are most impacted by public services. They have the greatest stake but are furthest away from influence and opportunity.

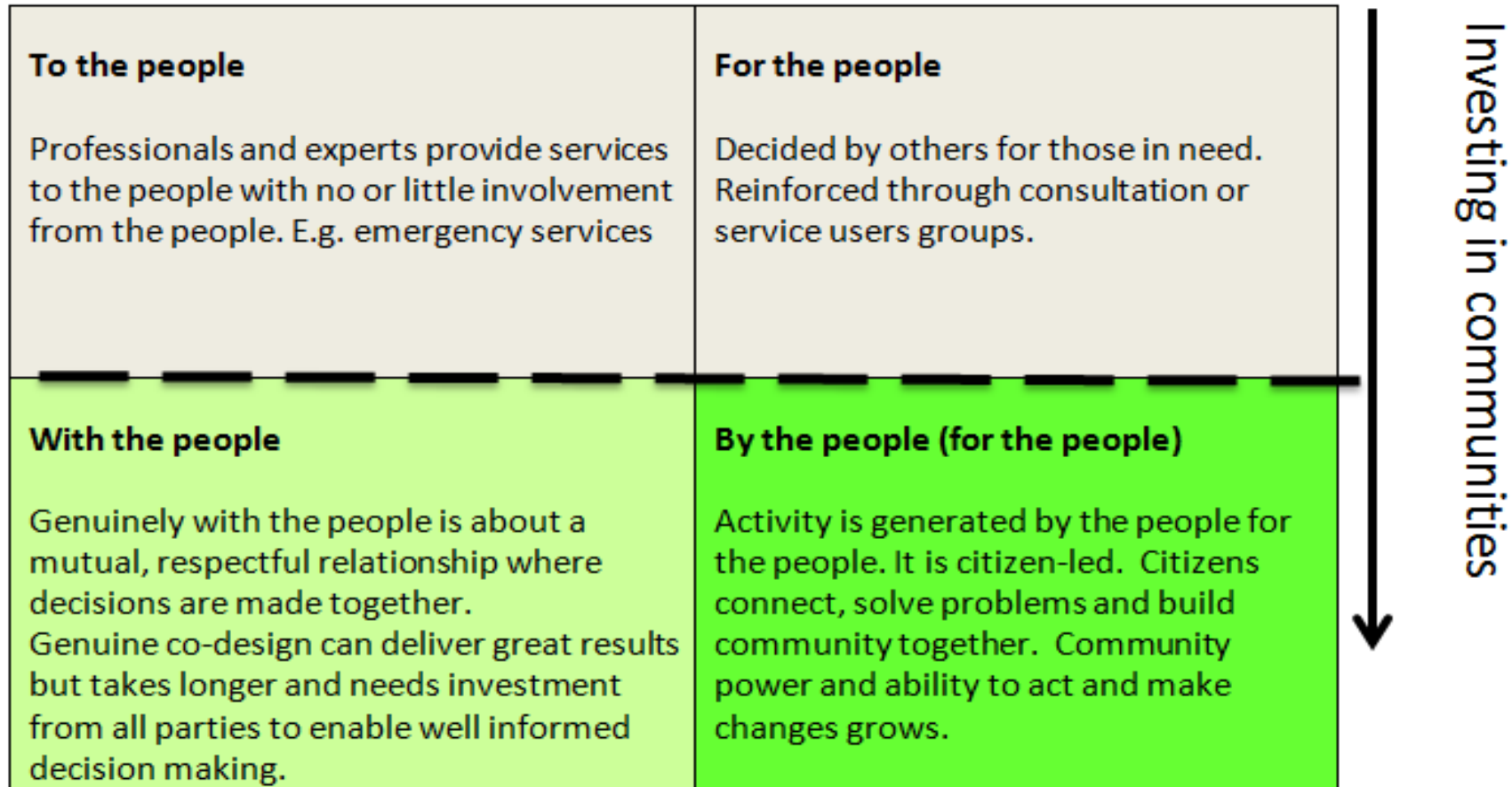
The Challenge

How can BCC use the resources we have to grow community capacity?

How can we make the space for early conversation and collaboration?

How can we simplify systems and procedures to unlock community action?

Growing the Power of Communities



How?

- Put community development at the heart of what we do
- Build on what's already happening
- Create spaces for learning/practice sharing
- Join up early engagement across the council
- Join up people working in two neighbourhoods to develop new ways of working:

establish shared behaviours and ways of working

foster collaboration with citizens and communities in day to day practice

identify how BCC systems and procedures can change to unlock assets

Take an action learning approach – do, learn, review

Scrutiny

We have set out the opportunity and the challenge as we see it and we have proposed some actions to move us forward.

What in your experience gets in the way of community action?

What would you propose as priorities for 20/21 which would grow the power of communities?