



ENERGY  
SERVICE  
BRISTOL

BRISTOL

# Fuel Poverty Action Plan

Hannah Spungin & Aisha Stewart



# Fuel Poverty in Bristol

Children and  
Young People



**Unhealthy homes  
increase the risk of**

---

- respiratory illness
- poor infant weight gain
- poor diet
- emotional and mental health problems
- physical injury and poisoning
- domestic fires

People of  
working age



**Unhealthy homes  
increase the risk of**

---

- respiratory illness
- cardiovascular problems
- mental health problems

Older people



**Unhealthy homes  
increase the risk of**

---

- respiratory illness
- cardiovascular problems
- excess winter deaths
- physical injuries, particularly from falls
- domestic fires



ENERGY SERVICE BRISTOL  
**BRISTOL  
ONE CITY**

# Strategic context

## National

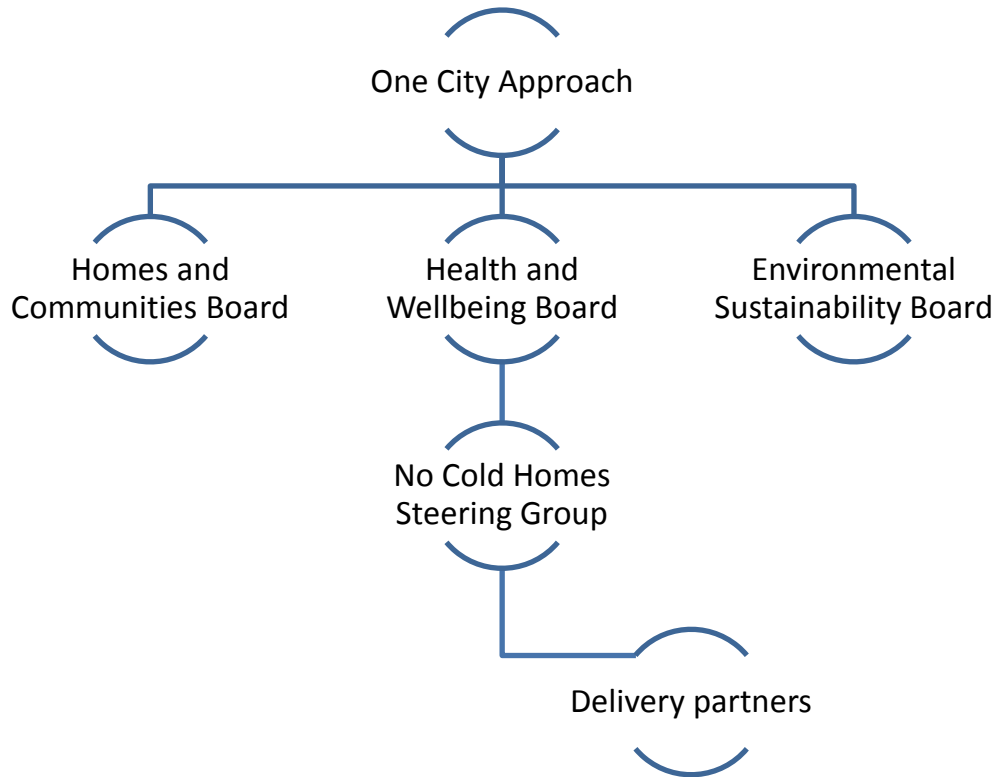
- Government's statutory fuel poverty target for England (2014)
- Public Health England Local action on health inequalities: Fuel poverty and cold home-related health problems (2014)
- NICE Guideline recommendations for excess winter deaths and illness and the health risks associated with cold homes (2015)

## Local

- Corporate Plan, One City Plan & One City Climate Strategy all refer to Fuel Poverty
- JSNA chapter on Fuel Poverty includes key recommendations for Bristol



# Proposed approach



## Governance

- Health and Wellbeing Board

## Endorsement

- Environment Sustainability Board
- Health and Wellbeing Board



ENERGY  
SERVICE  
BRISTOL

**BRISTOL**  
**ONE CITY**

# FP Action Plan in progress

- Work in Progress
- Split up into different Actions by Board (feedback?)
- Current work and Future work (couple of years)
- Just Energy Transition – links to Decarbonisation of Heat Plan
- Currently seeking feedback/input from organisations across the city
- So much is unknown it needs to be reviewed and grow
- Completed by Autumn 2020



ENERGY  
SERVICE  
BRISTOL

**BRISTOL**  
**ONE CITY**

# Offer

- Engaging with the relevant organisations across Bristol to obtain input to the Fuel Poverty Action Plan
- Complete action plan following feedback from various One City boards
- Speak to your organisations about the current support available for those in fuel poverty



# Ask

- Provide information on any current actions your organisation is doing around fuel poverty/energy efficiency improvements
- Consider any actions your organisation can take to prevent or alleviate fuel poverty or ensure a just transition
- Feedback & input on the draft of the action plan



# Warmer Homes Advice and Money

- A single point of contact support service covering Bristol & North Somerset helping to reduce financial, food and fuel poverty.
- How to refer:
  - Use the on-line referral form:  
[www.cse.org.uk/referral](http://www.cse.org.uk/referral)
  - Or call the free phone number: 0800 082 2234





# Discussion

- Work being undertaken by organisations
  - New build work? Housing Associations?
  - Does FP factor into any of the programs you are currently doing?
  - Does FP factor into any of the decision making within your organisation?
  - Were you aware of the government target of EPC C by 2030 for Fuel Poor Homes?
- Planned improvement works and Energy Efficiency
  - Do you consider homeowners bills when planning energy efficiency or sustainable energy work?
- Support for employees and tenants
  - Are you aware of support services for people in Fuel Poverty in Bristol?
  - What would be a useful resource?