

COVERS:

- BAR LOUNGE: 21
- LIBRARY SNUG: 16
- GROUND FLOOR CAFE/DINING: 58
- WINDOW SEATING: 12
- FIRST FLOOR LOUNGE DINING: 47
- FIRST FLOOR WORKSPACE: 6

EXTERNAL COVERS: 36

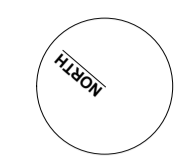
TOTAL COMBINED COVERS: 203

1 GROUND FLOOR PLAN

- FIRE FIGHTING EQUIPMENT & SIGNS:**
- 9 LITRE WATER FIRE EXTINGUISHER
 - 2 KG CARBON DIOXIDE FIRE EXTINGUISHER (OR HALON)
 - 9 LITRE FOAM FIRE EXTINGUISHER
 - FIRE BLANKET IN CONTAINER
 - SIGN: 'FIRE DOOR KEEP SHUT', 5 MM LETTERS (BOTH SIDES)
 - SIGN: 'FIRE DOOR KEEP LOCKED'
 - SIGN: 'FIRE ESCAPE KEEP CLEAR'
 - SIGN: 'FIRE EXIT, OR GRAPHIC EQUIVALENT', 75 MM LETTERS
 - DIRECTIONAL ARROW TO BE PROVIDED WITH S22 NOTICE
- FIRE ALARM SYMBOLS:**
- PANIC BOLT
 - SELF CLOSER
 - MAGNETIC RELEASE LOCK
 - HOLD OPEN
 - AREA COVERED BY AUTOMATIC HEAT DETECTORS
 - AREA COVERED BY AUTOMATIC SMOKE DETECTORS
 - ESCAPE CLEAR OPENING
 - FIRE ALARM SOUNDER
 - FIRE ALARM CALL POINT
 - FIRE ALARM PANEL - INDICATIVE POSITION
 - FIRE DOOR 1/2 HR - INTUMESCENT STRIPS AND SMOKE SEALS
 - FIRE DOOR 1 HR - INTUMESCENT STRIPS AND SMOKE SEALS
 - CEILING BEACON
- EMERGENCY LIGHTING SYSTEM:**
- An independent self-contained non-maintained system, type XOA180, will be installed in accordance with BS 5266-1:2005, Emergency Lighting - Part 1: Code of Practice for Emergency Lighting of premises other than cinemas and certain other specified premises for entertainment, and BS EN 50112: 2004, BS 5266-2: 2004 Lighting Applications - Emergency Lighting. Luminaires will be located in the approximate positions indicated on this drawing. All signs and notices will comply with BS 5499 - Part 1 - Fire Safety Notices and Graphic Symbols.
- ILLUMINATED SIGN WITH DIRECTIONAL ARROW
 - ILLUMINATED SIGN WITH DIRECTIONAL ARROW
 - AREA COVERED BY EMERGENCY LIGHTING - NON MAINTAINED
 - DEDICATED EMERGENCY LIGHT FITTING
- REFER TO SEPARATE DRAWING FOR EMERGENCY LIGHTING AND FIRE PROTECTION SCHEDULE - IF APPLICABLE TO THE SITE INDICATED ON PLAN
- FIRE ALARM SYSTEM:**
- A Fire Alarm system will be installed to BS 5839 - Part 1, 2002 Code of Practice for system design, installation, commissioning and maintenance, comprising of devices as indicated. The system category to be a L4 system. System to be zoned in accordance with Fire Officer's recommendations and fully compliant with current regulations.
- FIRE CURTAIN
- IF PRESENT - FIRE CURTAIN LINKED TO FIRE ALARM SYSTEM. ALL TO COMPLY WITH CURRENT REGULATIONS. SPECIFICATION BY ELECTRICAL CONTRACTOR. MUST BE 1 HR MINIMUM.

- FIRE ALARM PANEL:**
- Split box with fused isolator and DP key switch as installed for Fire Alarm Panel - Proposed fire alarm to be fully integrated into building system and zoned according to main panel, where applicable. To include both G.F.U. F.F.L & Basement where applicable. All in accordance with current regulations.
- FIRE ALARM CIRCUIT SCHEDULE:**
- INTERFACE TO HVAC PANEL
- SPRINKLER SYSTEM:**
- REQUIREMENT TO BE CONFIRMED BY BUILDING CONTROL CONSULTANT
- LICENSABLE ACTIVITIES:**
- RED LINE INDICATES DENISE OF LICENSABLE ACTIVITIES
- ALL FIRE OFFICERS REQUIREMENTS WILL BE ADHERED TO ON COMPLETION OF ALL THE PROPOSED ALTERATIONS TO THE EXISTING LAYOUT AND INDEPENDENTLY CHECKED BY BUILDING CONTROL INSPECTORS FOR APPROVAL.**

drawing	Licensing: Plan: GROUND FLOOR as Proposed	
drawing number	revision	
2113-LC-PL-11	-	12 Blackstock Mews London N4 2BT
status	Preliminary	t: +44 (0) 20 7998 7651
scale	1:50	m: +44 (0) 78 8267 6709
size	A1	e: mail@harchitecture.co.uk
project	CLIFTON COPPA	This drawing and design is for use solely in connection with the project described below. The drawing and the design is the copyright of H and J architecture and must not be reissued, loaned or copied without written consent. All dimensions and setting out to be checked on site before construction. Do not scale from this drawing. The drawing is to be read in conjunction with all other information relevant to the project. Any apparent discrepancy to be brought to the attention of the architect.

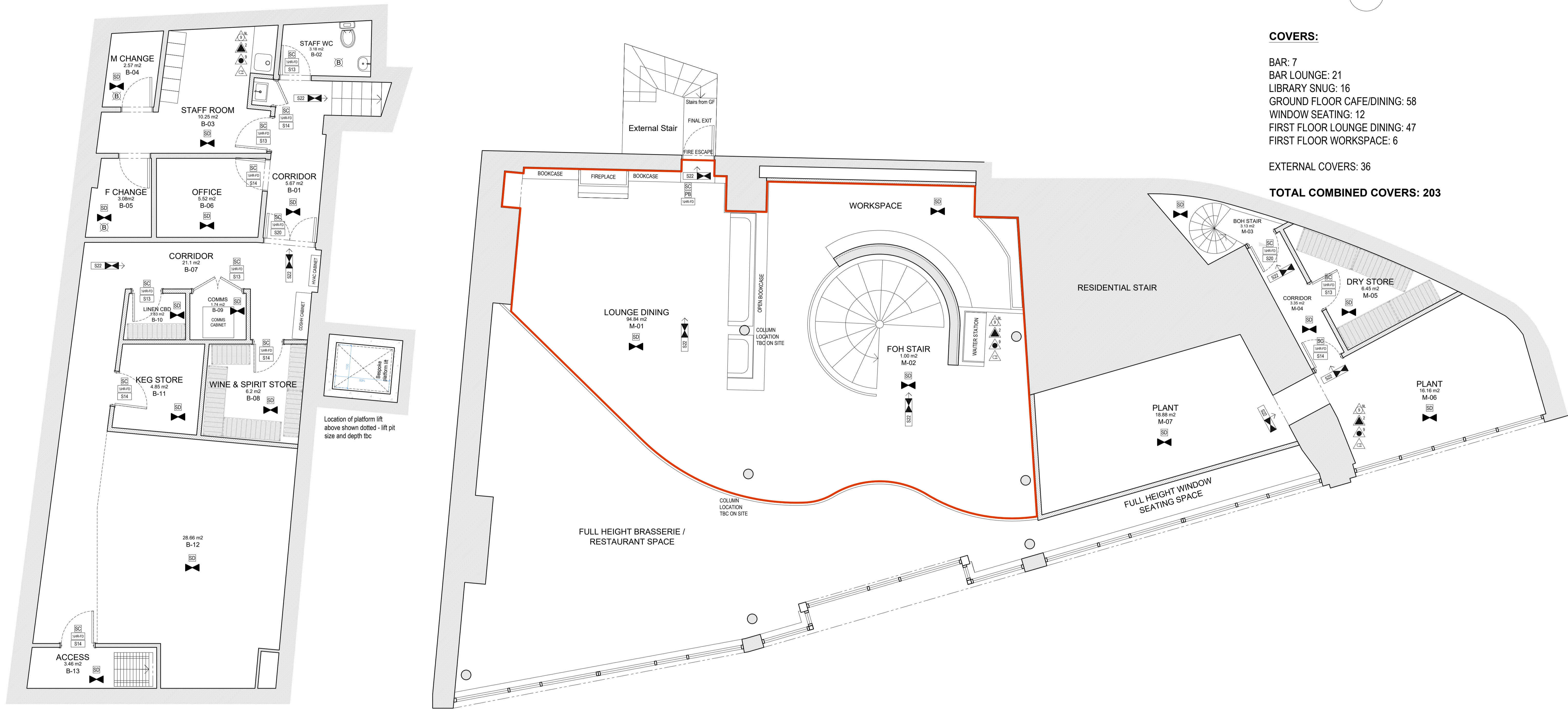


COVERS:

- BAR: 7
- BAR LOUNGE: 21
- LIBRARY SNUG: 16
- GROUND FLOOR CAFE/DINING: 58
- WINDOW SEATING: 12
- FIRST FLOOR LOUNGE DINING: 47
- FIRST FLOOR WORKSPACE: 6

EXTERNAL COVERS: 36

TOTAL COMBINED COVERS: 203



Location of platform lift above shown dotted - lift pit size and depth tbc

1 BASEMENT

2 FIRST FLOOR PLAN

- FIRE FIGHTING EQUIPMENT & SIGNS:**
- 9 LITRE WATER FIRE EXTINGUISHER
 - 2 KG CARBON DIOXIDE FIRE EXTINGUISHER (OR HALON)
 - 9 LITRE FOAM FIRE EXTINGUISHER
 - FIRE BLANKET IN CONTAINER
 - SIGN: 'FIRE DOOR KEEP SHUT', 5 MM LETTERS (BOTH SIDES)
 - SIGN: 'FIRE DOOR KEEP LOCKED'
 - SIGN: 'FIRE ESCAPE KEEP CLEAR'
 - SIGN: 'FIRE EXIT', OR GRAPHIC EQUIVALENT, 75 MM LETTERS
 - DIRECTIONAL ARROW TO BE PROVIDED WITH S22 NOTICE

- FIRE ALARM SYMBOLS:**
- PANIC BOLT
 - SELF CLOSER
 - MAGNETIC RELEASE LOCK
 - HOLD OPEN
 - AREA COVERED BY AUTOMATIC HEAT DETECTORS
 - AREA COVERED BY AUTOMATIC SMOKE DETECTORS
 - ESCAPE CLEAR OPENING
 - FIRE ALARM SOUNDER
 - FIRE ALARM CALL POINT
 - FIRE ALARM PANEL - INDICATIVE POSITION
 - FIRE DOOR 1/2 HR - INTUMESCENT STRIPS AND SMOKE SEALS
 - FIRE DOOR 1 HR - INTUMESCENT STRIPS AND SMOKE SEALS
 - CEILING BEACON

- EMERGENCY LIGHTING SYSTEM:**
- An independent self-contained non-maintained system, type XOA180, will be installed in accordance with BS 5266-1:2005, Emergency Lighting - Part 1: Code of Practice for Emergency Lighting of premises other than cinemas and certain other specified premises for entertainment, and BS EN 50112: 2004, BS 5266-2: 2004 Lighting Applications - Emergency Lighting. Luminaires will be located in the approximate positions indicated on this drawing. All signs and notices will comply with BS 5499 - Part 1 - Fire Safety Notices and Graphic Symbols.
- ILLUMINATED SIGN WITH DIRECTIONAL ARROW
 - ILLUMINATED SIGN WITH DIRECTIONAL ARROW
 - AREA COVERED BY EMERGENCY LIGHTING - NON MAINTAINED
 - DEDICATED EMERGENCY LIGHT FITTING
- REFER TO SEPARATE DRAWING FOR EMERGENCY LIGHTING AND FIRE PROTECTION SCHEDULE - IF APPLICABLE TO THE SITE INDICATED ON PLAN

- FIRE ALARM SYSTEM:**
- A Fire Alarm system will be installed to BS 5839 - Part 1, 2002 Code of Practice for system design, installation, commissioning and maintenance, comprising of devices as indicated. The system category to be a L4 system. System to be zoned in accordance with Fire Officer's recommendations and fully compliant with current regulations.
- FIRE CURTAIN
- IF PRESENT - FIRE CURTAIN LINKED TO FIRE ALARM SYSTEM. ALL TO COMPLY WITH CURRENT REGULATIONS. SPECIFICATION BY ELECTRICAL CONTRACTOR. MUST BE 1HR MINIMUM.

- FIRE ALARM PANEL:**
- Split box with fused isolator and DP key switch as installed for Fire Alarm Panel - Proposed fire alarm to be fully integrated into building system & zoned according to main panel, where applicable. To include both G.F.U. F.L. & Basement where applicable. All in accordance with current regulations.
- FIRE ALARM CIRCUIT SCHEDULE:**
INTERFACE TO HVAC PANEL
- SPRINKLER SYSTEM:**
REQUIREMENT TO BE CONFIRMED BY BUILDING CONTROL CONSULTANT

- LICENSABLE ACTIVITIES:**
- RED LINE INDICATES DEMISE OF LICENSABLE ACTIVITIES

ALL FIRE OFFICERS REQUIREMENTS WILL BE ADHERED TO ON COMPLETION OF ALL THE PROPOSED ALTERATIONS TO THE EXISTING LAYOUT AND INDEPENDANTLY CHECKED BY BUILDING CONTROL INSPECTORS FOR APPROVAL.

drawing	Licensing: Plan: BASEMENT AND FIRST FLOOR as Proposed		architects 12 Blackstock Mews London N4 2BT t: +44 (0) 20 7998 7651 m: +44 (0) 78 8267 6709 e: mail@harchitecture.co.uk
drawing number	revision		
2113-LC-PL-12	-	This drawing and design is for use solely in connection with the project described below. The drawing and the design is the copyright of H and J architecture and must not be reissued, loaned or copied without written consent. All dimensions and setting out to be checked on site before construction. Do not scale from this drawing. The drawing is to be read in conjunction with all other information relevant to the project. Any apparent discrepancy to be brought to the attention of the architect.	
status	Preliminary		
scale	1:50	size	A1
project	CLIFTON COPPA		