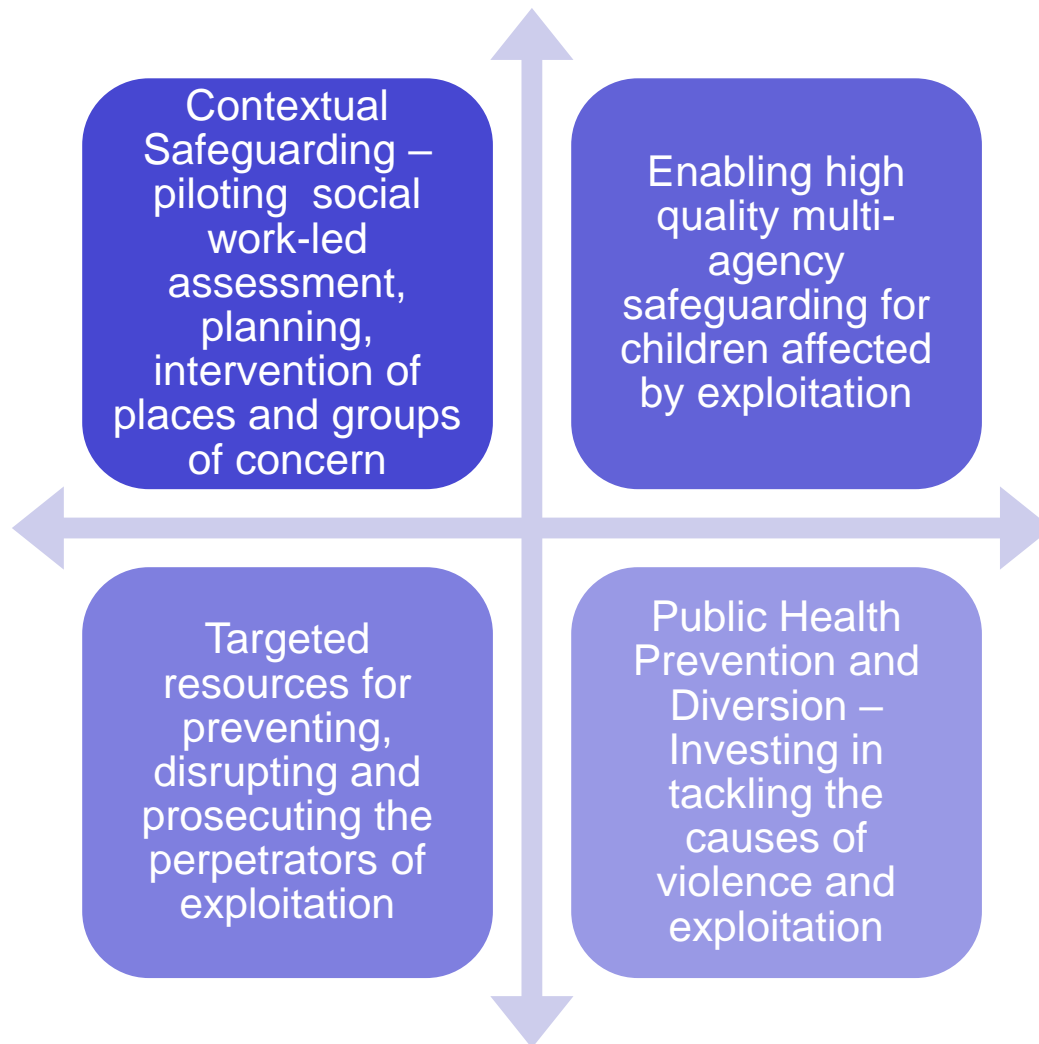


The Safer Options Approach

Building an integrated system to prevent and protect children from violence and harm in our communities

What is “Safer Options”?



Safer Options is the name we give to a coordinated whole system response to prevent serious violence and exploitation.

Safer Options provides an umbrella under which new initiatives are brought together to enable a coherent response to extrafamilial harm to develop

Safer Options is Bristol’s devolved violence reduction unit which is part of the Avon and Somerset-wide violence reduction partnership. In Bristol we have decided that our approach will span all forms of extrafamilial harm.

Our aims

Develop a coherent system which:

- Minimises duplication of safeguarding decision-making processes and maintains core assessment, planning and review pathways
- Recognises exploitation primarily as a safeguarding issue not a community safety/criminal justice issues
- Brings in non-traditional safeguarding partners into our safeguarding practices for information sharing and intervention including community intelligence, licencing, housing, community safety, businesses
- Improves live-time data and information sharing with the police
- Develops ways of assessing risk outside the family home within our statutory frameworks
- Retain focus and investment on early intervention and prevention whilst providing therapeutic services for those at the highest risk
- Builds multi-agency workforce skill and capacity in delivering services to adolescents as an expectation for all social workers and FIF workers

Key Principles

- **Safeguarding is everyone's business:** It will take all of us, committed to making change over a sustained period to have an impact. This is not the work of a small team but a whole system.
- **Children lives are not lived in silos:** They are exposed to multiple changing harm in their communities, peer groups and homes. How children are harmed fluctuates. We need an agile system ready to respond which recognises the unique needs of adolescents without creating a siloed response to adolescent exploitation
- **Retaining focus on early intervention and prevention whilst managing the highest risk:** We need to balance the risk management through our child protection system, protecting children currently being harmed, with supporting our communities to build sustainable preventative solutions so that other children are protected from harm in the future.

What this looks like in Bristol

Coordination

Multi-disciplinary team (Safer Options Hub) bringing together Violence Reduction practitioners and exploitation practitioners focused on workforce development; capacity-building; piloting new approaches; coordinating information; brokering bespoke support for children

Assessment

Maintained single early help and social care assessment framework for all types of abuse and neglect. No duplicate assessment process. Single assessment includes contextual safeguarding prompts and contextual safeguarding triangles to aid balancing extra-familial harm and familial harm. Training roll-out beginning this month following pilots with University of Bedfordshire.

Multi-agency leadership

Weekly multi-agency meetings in each of the three localities coordinating the areas operational strategic response to exploitation and serious violence. Chaired by social care Deputy Service Manager. Dynamic information sharing with increasing focus on contextual pathways for assessment and intervention with groups and places

Dynamic data products

Safer Options app; Police Violence Reduction app; Exploitation app. Live-time multi-agency Qlik apps which model known risk and use predictive analytics to enable strategic targeting of resource

Education inclusion

Multi-year investment in Education Inclusion Managers focused on delivering projects supporting schools to reduce educational exclusion. Recently scaled up force-wide as recognition of good practice model by Home Office.



Children and Families Services





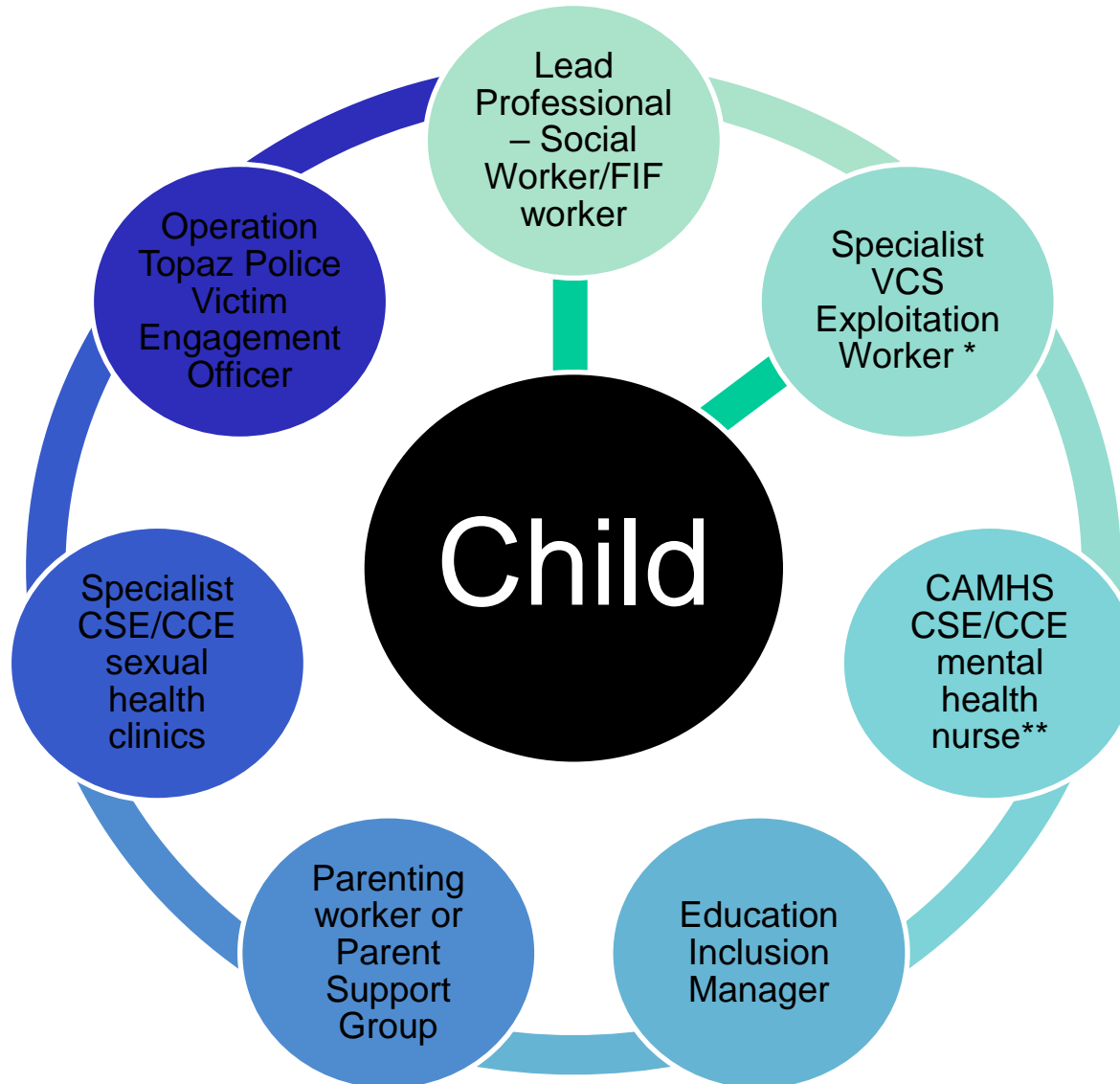
Barnardo's Old Market - BASE & ROUTES

- Working in Bristol to tackle exploitation since 1995
- Old Market is base of our range of different funded extra-familial harm responses
- BASE and ROUTES work with those young people who experience high level harm in the community
- Relationship based and trauma responsive
- Currently working with 130 young people
- Impact

Barnardo's Partnership with Bristol

- Barnardo's invested over £3 million in last 26 years; £229K this year
- Tackling exploitation is a core priority within Barnardo's Business Plan
- Partnership and service design proposal
- Principles of co-design, inclusion and involvement of young people, families and communities
- Timeline – Jan to August 2022
- Bristol is first Local Authority that Barnardo's is partnering with to tackle exploitation

Multi-disciplinary team around the child



*usually Barnardo's worker including ICTG but can be culturally specific specialist workers in some instances

**to be enhanced with Clinical Psychologist providing multi-agency case formulation from 2022

***delivered from Barnardo's Project

Children and Families Services

Prevention, Diversion and Community Intervention

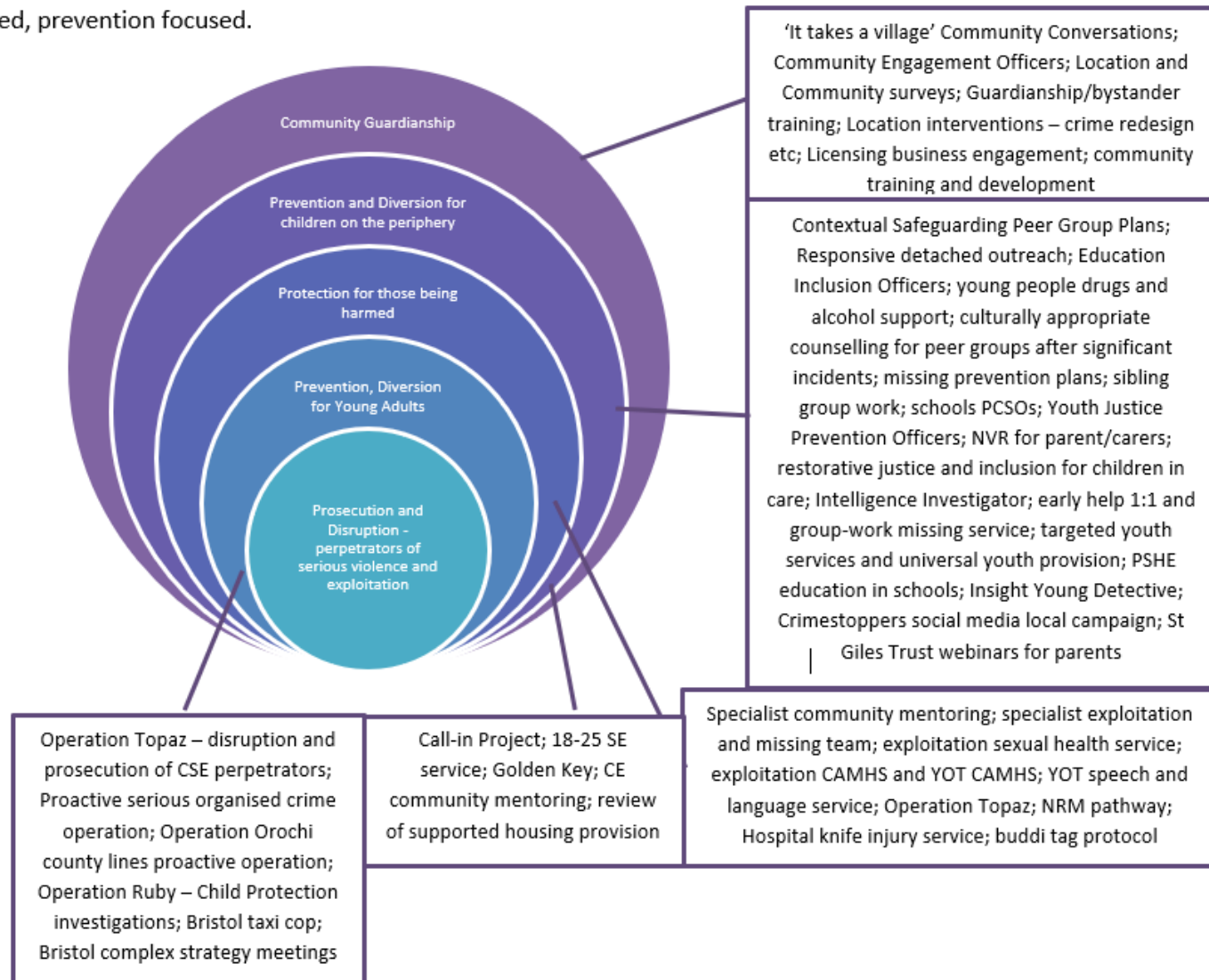
Children and Families Services



Intervention at every level

▲ Safer Options (Violence Reduction Unit)

Whole system response to CCE, CSE, Missing, Serious Violence and Knife Crime Concerns; intelligence led, evidence informed, prevention focused.



Preventative Interventions

- **Creative Youth Network:** targeted bespoke one-to-one youth support over 3-6 months as part of universal and targeted youth offer
- **Girls groups:** group programme supporting girls on the periphery of groups exposed to extrafamilial harm. One in each locality of the city.
- **Education Inclusion Workers:** workers embedded in six secondary schools providing enhanced pastoral care and preventative interventions in the school environment to young people at risk of exploitation
- **Detached and in-reach youth work** across the city linked to hot spots and areas of higher need. Model of “pop-up” youth club trialled in summer 2021
- **Blunt Truth: schools workshop** partnership programme with the NHS to encourage young people to speak to their school, the Police or through FEARLESS (youth arm of Crime Stoppers) if they know young people who are knife carrying
- **The Bright Outlook (NHS) Programme** an NHS led anti-knife crime programme working with selected young people from secondary schools across Bristol.

Proactive Interventions



- **Weapons and Drugs in Schools:** 24 hour rapid response by Education Inclusion Managers putting in place risk assessment and preventative programme of work reducing exclusion
- **Hospital Rapid Response:** 24 hours rapid outreach services from Barnardo's offering specialist support to any child presenting in a hospital trust in the area with an injury from serious violence
- **Late-night outreach:** youth work, police and social work targeted outreach in areas where there is concern about organised exploitation of children/missing children. Includes proactive engagement programme with adult street sex workers to build confidence in information sharing about children being exploited through organised crime
- **Conflict Resolution:** 18 trained multi-agency professionals from 10 partnership agency trained in LEAP's conflict resolution model. Due to start proactive conflict resolution between groups of young people in December 2021. Coordinated by Safer Options Hub.

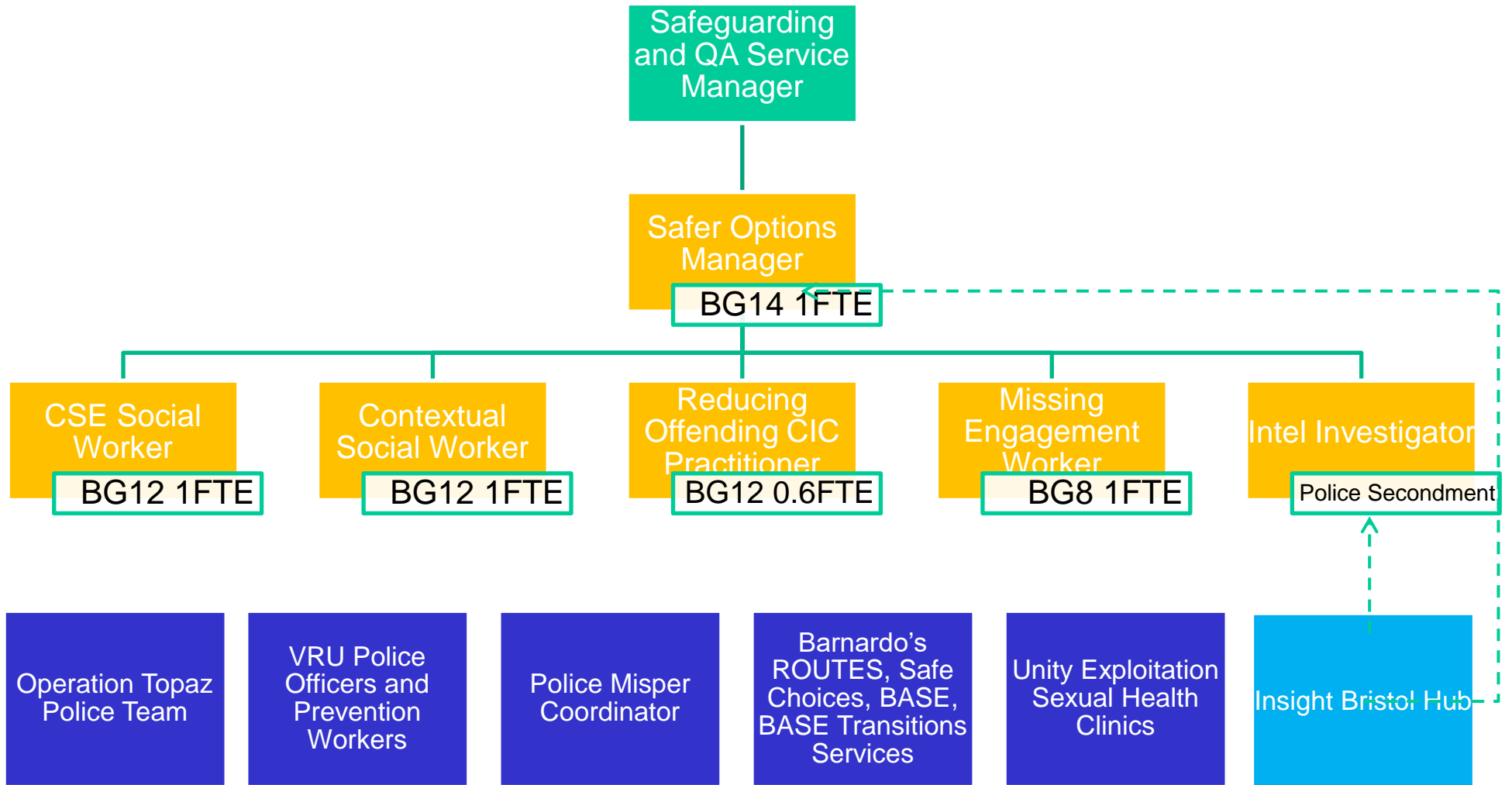
Targeted Interventions and Diversion

- **Community Mentoring:** framework of 20 providers of community mentors across the city offering 3-12 months of community mentoring support for young people at medium/high risk of exploitation and their siblings
- **Parent Support Groups:** parent-led support groups in each area of the city providing advice, guidance and peer support as parents of children affected by exploitation
- **Call-in Project:** deferred charging programme for 16-21 year olds in East/Central arrested for crimes related to drug-dealing and serious violence
- **BDP New Leaf Project:** young people's substance misuse project for young people dealing or using cannabis (accepts referrals through out of court disposal as well as direct)

Participation, voice and influence

- **Peer Influencers:** currently recruiting 6 young people (16-21) with lived experience of exploitation in paid roles contributing to peer research of services; strategy development; and peer service delivery
- **It takes a village meetings:** community development meetings run by lead VCS groups to engage community members in issues related to exploitation and serious violence and shape strategy
- **Child safeguarding practice reviews:** engagement of parents and young people central to commissioning of reviews and shaping recommendations
- **Safer Options approach 2020:** independent research on the views of young people for delivering CCE services

Safer Options Hub



Children and Families Services



Governance

