

Appendix A1 – Trinity Rd – Police Facility Plans

2.6 POLICE FACILITY ACCOMMODATION

NEIGHBOURHOOD POLICE FACILITY

The neighbourhood Police Facility is located in the North East corner of the site on level 00 of Block C.

- The public entrance is accessed off Trinity Road on a glazed corner ensuring good line of sight on arrival for the public.

- The office areas within the Police facility have large areas of obscure glazing, providing good levels of natural light whilst maintaining appropriate levels of privacy.

- The area and layout for the secure compound has been subject to detailed vehicular tracking submitted as part of this application

- Security requirements of the neighbourhood police facility and its secure compound has resulted in the need for a proposed line of high performance bollards to the kerbside of Trinity Road.

- The security requirements extend to within the courtyard of the development where high anti climb railings of minimum 2.4m surround the secure compound at level 01 and are full height to the decked access of block C at level 01. (See image right and AFA drawing 'proposed Courtyard Elevation - Block C').

The neighbourhood Police Facility will feature:

- Illuminated and general signage
- Hostile vehicle mitigation bollards to Trinity Road
- Lightweight steel canopies to car parking spaces
- Radio aerials for Airwave or ESN system
- External lighting and CCTV
- 5x EV charging points
- External Wall mounted hatch phone
- External Wall mounted defibrillator

The final locations of some of the items above is yet to be determined.

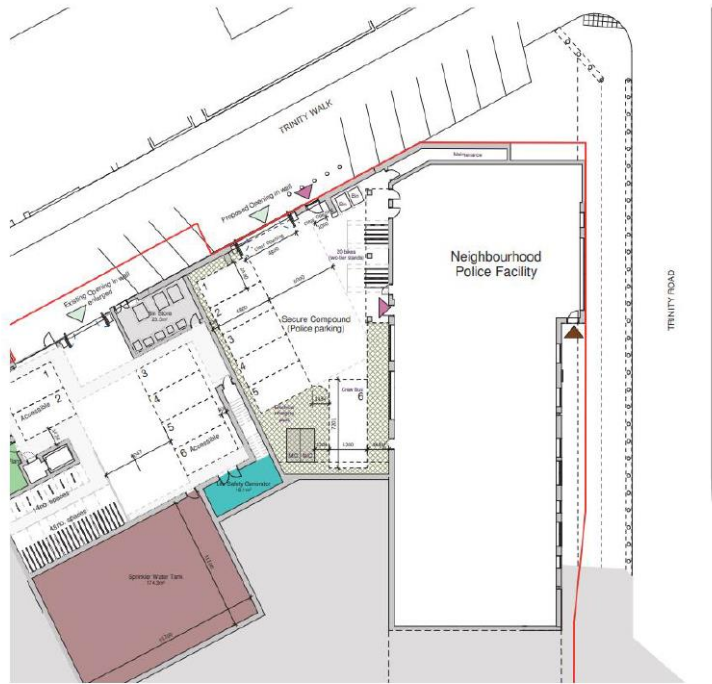


Figure 1 - Proposed Police Facility taken from applicants Design and Access Statement



Figure 2 - Proposed 3D Visual Block