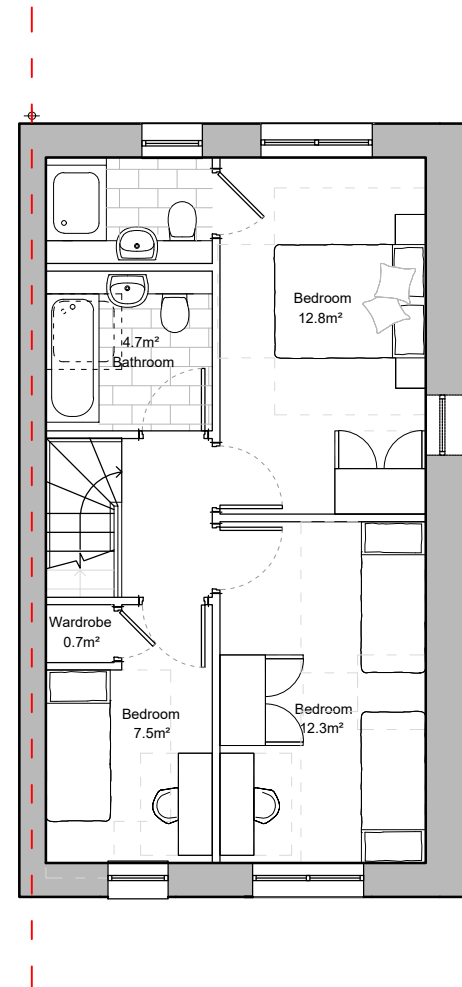
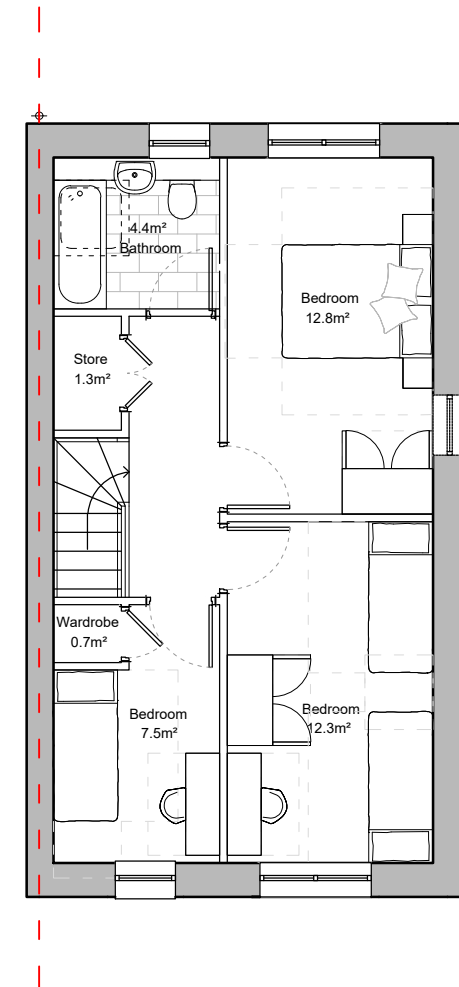


Ground Floor Plan  
1 : 100



First Floor Plan Type 1  
1 : 100

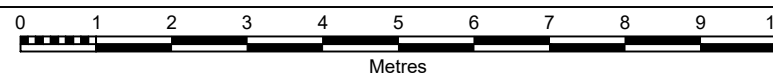


First Floor Plan Type 2  
Affordable Units Only  
1 : 100

3B5PH - Level 01  
46.8m²

3 Bed 5 Person House - 2 Storey	
AREA	
Gross Floor Area:	93.6 m <sup>2</sup>
NDSS Target Gross Floor Area:	93.0 m <sup>2</sup>
Combined K/L/D Area:	34.4 m <sup>2</sup>
STORAGE:	
PFS Unit Gross Storage Area:	4.2 m <sup>2</sup>
Affordable Unit Storage Area:	5.5 m <sup>2</sup>
NDSS Min. Storage Area:	2.5 m <sup>2</sup>

Rev	Date	Drawn	Description
A	17.08.20	NHE	Draft Issue
B	30/10/20	PFR	Issue to Client
C	06/11/20	PFR	Issue for Planning
D	23/11/20	PFR	Revised - Issue for Planning
E	12.01.21	NHE	Revised Energy Strategy



3B5PH-2 Storey House  
drawing title Romney House, Bristol  
client / project Vistry & Goram Homes  
Romney House

HTA-A\_DR\_0307  
drawing number

1 : 100  
Scale @ A3

GTP-RHB  
project number

E  
revision

NHE  
originated by

FOR PLANNING  
status

HTA Design LLP  
www.hta.co.uk  
London | Edinburgh | Manchester | Bristol

